

SPARE PARTS LIST

QS-SYSTEM



© 2008 Interspiro AB, Sweden. This publication contains or refers to proprietary information which is protected by copyright. All rights are reserved. Interspiro® and Spiromatic® are registered trademarks belonging to Interspiro.

This publication may not be copied, photocopied, reproduced, translated, or converted to any electronic or machine-readable form in whole or in part without prior written approval from Interspiro.

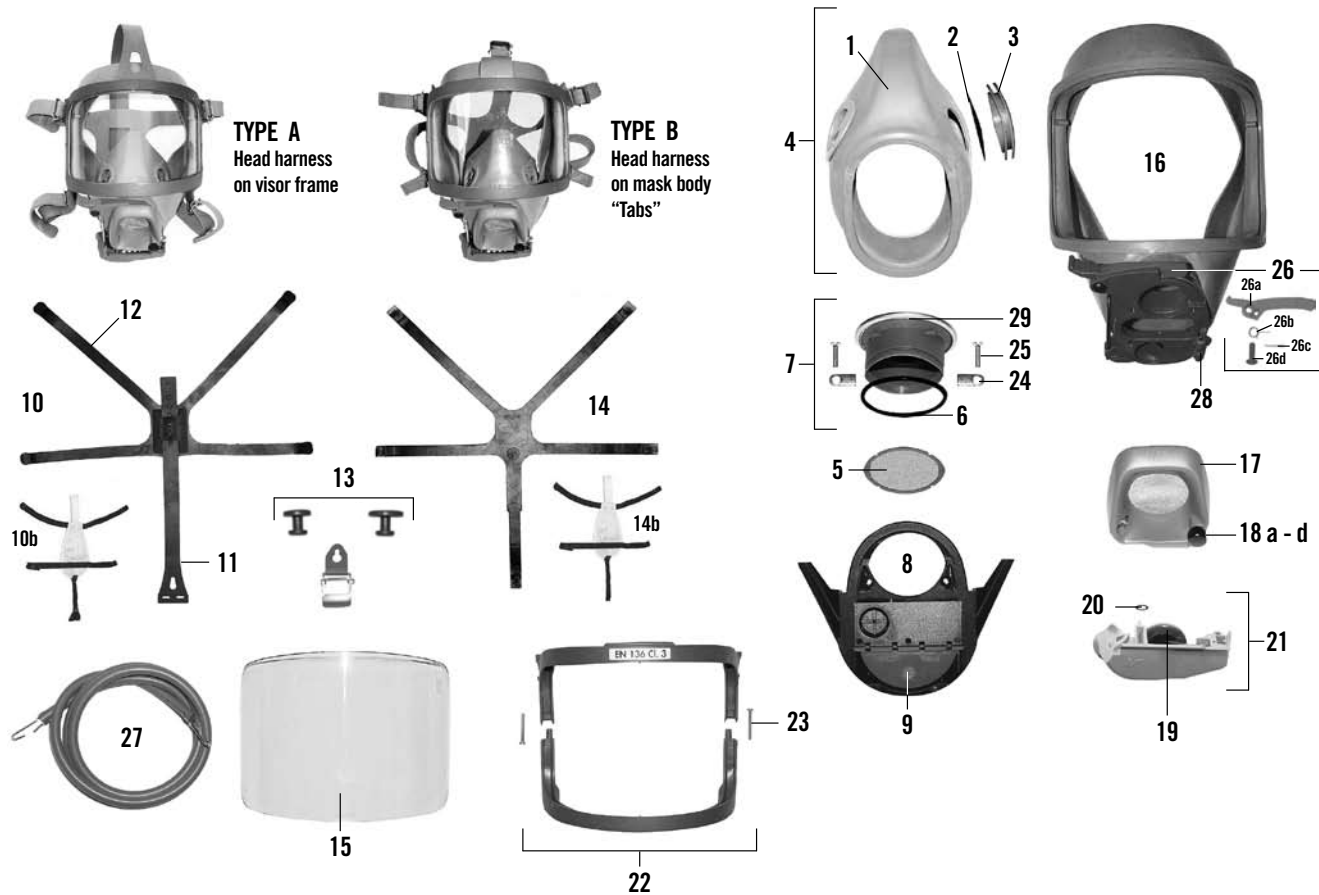
READ BEFORE USE

1. Only holders of a valid **INTERSPIRO SERVICE CERTIFICATE** may carry out service and repairs on **INTERSPIRO** breathing equipment. Unauthorized service may result in malfunction and users relying thereon could sustain severe respiratory injury or death.
2. When using the spare part list always refer to the equipments **SERVICE MANUAL** in regard to procedure and handling of the spare parts assembly and function.
3. Changes to this document – necessitated by typographical errors, inaccuracies of current information or improvements and changes of equipment – may be done at any time and without prior notice.
4. Some items include a character for identification purposes, ex. 4a and 4b. For some of these items a part number is not available. The identification character used for these items is intended to serve as a reference when following instructions in a service manual. They cannot be ordered as separate items.
5. The service kits contain replacement items used for preventive maintenance. The service kit description “1 singular item of each of #6” means that one single item from part number 6 is included – even if part number 6 is a 10 pack.
6. Always refer to **WWW.INTERSPIRO.COM** for product or document updates and for service bulletines.

CONTENTS

S-FACE MASK AMBIENT AIR VERSION, GREY	6
S-BREATHING VALVE AMBIENT AIR VERSION, GREY	7
S-FACE MASK AMBIENT AIR VERSION, BLACK	8
S-BREATHING VALVE AMBIENT AIR VERSION, BLACK	9
S-FACE MASK FIRST BREATH VERSION, GREY	10
S-BREATHING VALVE FIRST BREATH VERSION, GREY	11
S-FACE MASK FIRST BREATH VERSION, BLACK	12
S-BREATHING VALVE FIRST BREATH VERSION, BLACK	13
S-BYPASS	14
SPIROMATIC FACE MASK	15
SPIROMATIC BREATHING VALVE	16
SPIROMATIC BREATHING VALVE	17
SPIROHATCH	18
MANIFOLD	19
PRESSURE REGULATOR	20
WHISTLE INSERT ASSEMBLY	21
BREATHING HOSES AND MANIFOLDS	22
SPIROMATIC REGULATOR UNIT	23
SPIROMATIC PRESSURE REGULATOR	24
SPIROMATIC RESERVE AIR WARNING DEVICE	25
SPIROMATIC WHISTLE WARNING DEVICE	26
T-PIECE	27
TWO TYPES OF CYLINDER VALVE.....	28
CYLINDER VALVE - TYPE I	29
CYLINDER VALVE - TYPE II	30
CYLINDERS	31
QS-HARNESS	32
CYLINDER STRAP	33
LOWER CYLINDER BRACKETS	34
CYLINDER PACK BRACKET	35
QS-R REGULATOR UNIT	36
QS-R RESERVE AIR WARNING DEVICE	37
SERVICE AND TESTING SCHEDULE	38

S-FACE MASK AMBIENT AIR VERSION, GREY

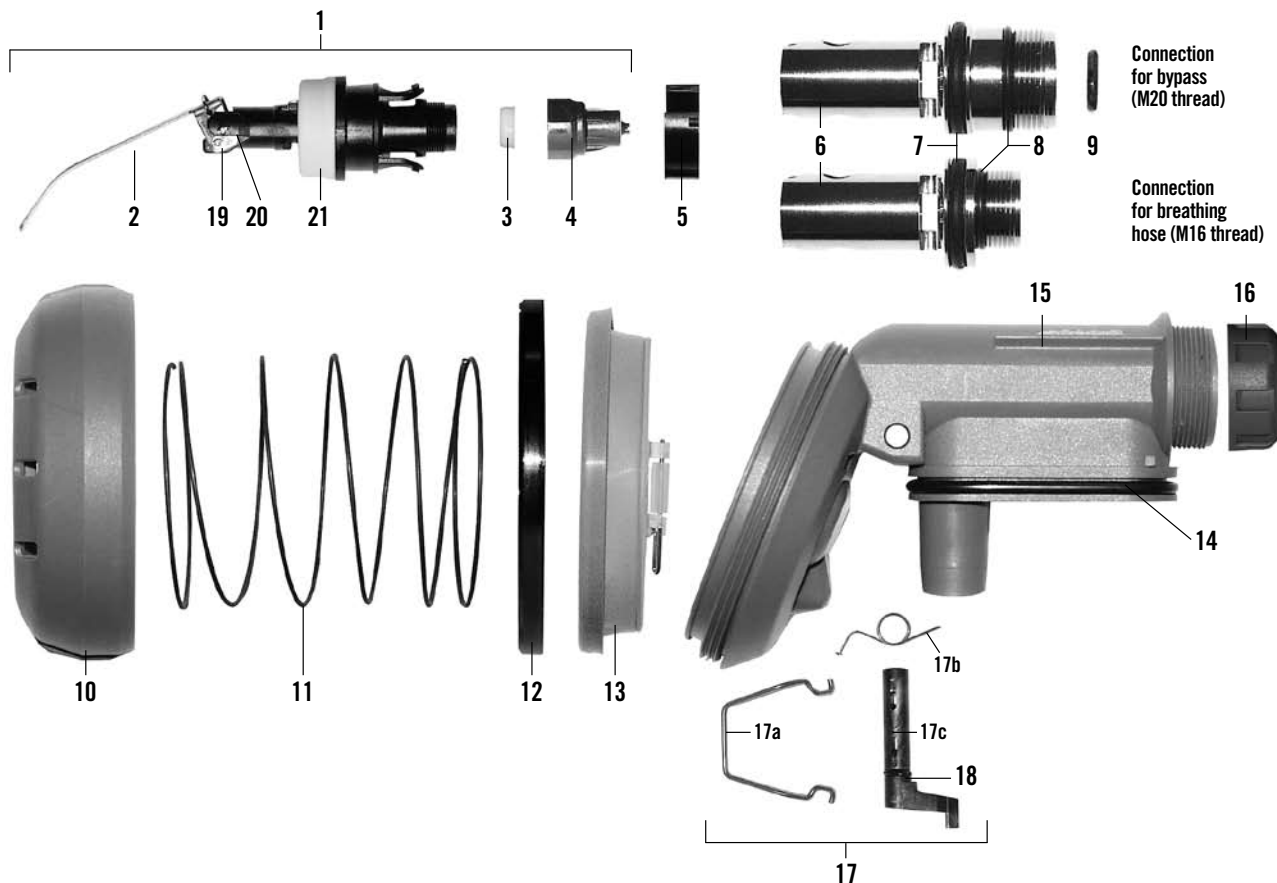


#	DESCRIPTION	ORDERING NO.	NOTES
1	a. Inner mask, std size mask	460 190 016	
	b. — —, small size mask	460 190 605	
	c. — —, extra large size mask	96 756-51	
	d. — —, silicone, std size mask	95 012-51	
2	Non-return valve disc	336 890 132	10 pack
3	Non-return valve seat	460 190 015	
4	a. Inner mask Assy, std size mask	460 190 263	
	b. — —, small size mask	460 190 606	
	c. — —, extra large size mask	460 190 341	
	d. — —, silicone, std size mask	460 190 349	
5	Protective net	460 190 149	
6	O-ring	336 190 790	10 pack
7	Speech cone Assy	460 190 013	
8	Inner mask plate	460 190 019	Incl. #9/24/25
9	Non-return flap	460 190 072	5 pack
10	a. Head harness Assy	460 190 002	Type A, #11-13
	b. — —	95 612-51	Hairnet
11	Top strap	460 190 004	Type A
12	Head harness	460 190 003	Type A
13	a. Buckle Assy	460 190 005	Type A, 4 pcs.
	b. — —	460 190 346	Type B, 5 pcs.
14	a. Head harness	460 190 375	Type B
	b. — —	460 190 352	Hairnet
15	a. Visor	460 190 350	
	b. — —, hardcoated	460 190 351	
	c. — —, hardcoated, anti-fog	96 701-51	
16a.	Mask body Assy	460 190 012	Type A
	b. — —, silicone	460 190 353	Type A
	c. Mask body Assy, std size	460 190 244	Type B
	d. — —, small size	460 190 342	Type B
	e. — —, extra large size	460 190 343	Type B
	f. — —, silicone, std size	460 190 354	Type B

#	DESCRIPTION	ORDERING NO.	NOTES
17	External speech cone	460 190 018	Incl. #18
18 a.	Hand screw	460 190 148	compl.
	b. Pivot bushing 10-pack	460 190 287	10 pack
	c. Washer 10-pack	460 190 288	10 pack
	d. Screw	460 190 289	10-pack
19	Exhalation valve disc	460 190 011	5 pack
20	O-ring	460 190 071	10 pack
21	Exhalation valve Assy	460 190 017	
22	a. Visor frame Assy	460 190 009	Type A
	b. — —	460 190 297	Type B
23	Screw	336 190 409	10 pack
24	Locking plate	460 190 223	10 pack
25	Screw	460 190 239	10 pack
26	Indicator arm	460 190 309	
27	Neck strap	460 190 008	
28	Locking pin	460 190 374	5 pack
29	Speech cone	336 190 773	Incl. #6

#	DESCRIPTION	ORDERING NR.
A	Service kit for 1 apparatus S-face mask ambient air version — 1 singular item of each of #6/9/19/20 — 2 singular items of each of #2	460 190 324
B	Service kit for 10 apparatus S-face mask ambient air version — 10 singular item of each of #6/9/19/20 — 20 singular items of each of #2	460 190 669

S-BREATHING VALVE AMBIENT AIR VERSION, GREY

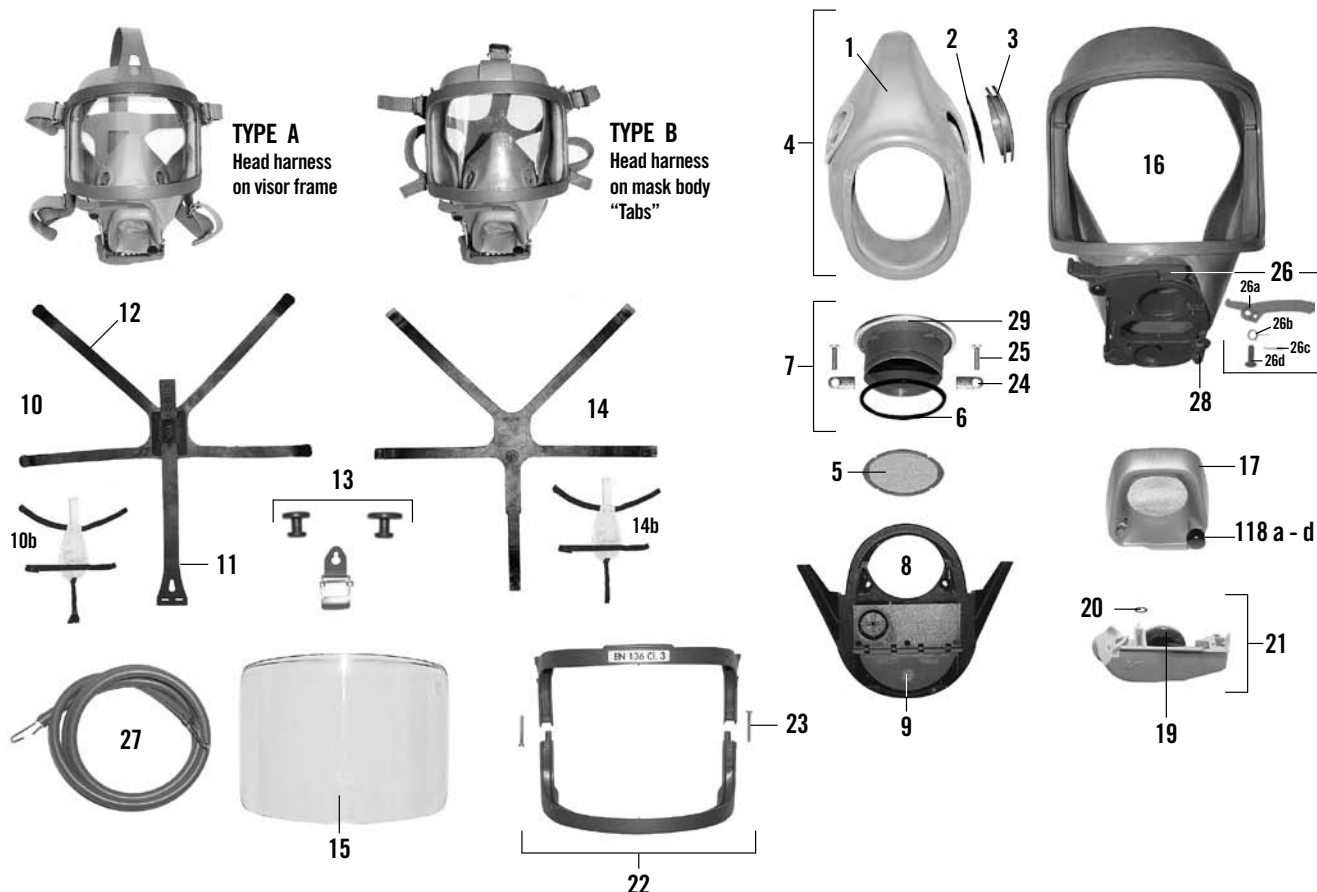


#	DESCRIPTION	ORDERING NO.	NOTES
• a.	S-Breathing valve, M16	95 080-02	M16 thread
b.	— —, M20	95 080-01	M20 thread
1	Valve insert	460 190 222	
2	Lever Assy	460 190 348	
3	Balancing diaphragm	460 190 028	5 pack
4	Valve cone	336 890 129	
5	Locking ring	460 190 068	5 pack
6	a. Connection nipple, M20	460 190 241	
	b. — —, M16	460 190 242	
7	O-ring	336 190 227	10 pack
8	a. O-ring, M20	460 190 080	10 pack
	b. — —, M16	336 190 228	10 pack
9	O-ring	460 190 057	10 pack
10	Cover	95 061-51	5 pack
11	Positive pressure spring	460 190 022	5 pack
12	Diaphragm ring	460 190 308	10 pack

#	DESCRIPTION	ORDERING NO.	NOTES
13	Diaphragm Assy	460 190 021	
14	O-ring	460 190 023	10 pack
15	Valve housing	460 190 024	Incl. #10/14/16/17
16	Locking nut	346 190 201	5 pack
17	Lifting arm Assy	460 190 150	Incl. #18
18	O-ring	336 190 225	10 pack
19	Pin	460 190 151	10 pack
20	Locking spring	460 190 152	10 pack
21	Sealing sleeve	460 190 027	5 pack

#	SERVICE KIT	ORDERING NO.
A	Service kit for 1 apparatus S-breathing valve ambient air version, M16 thread – 1 singular item of each of #1/7/8/13/14/17	460 190 377
B	Service kit for 10 apparatus S-breathing valve ambient air version, M16 thread – 10 singular items of each of #1/7/8/13/14/17	460 190 670
C	Service kit for 1 apparatus S-breathing valve ambient air version, M20 thread – 1 singular item of each of #1/7-9/13/14/17	460 190 347
D	Service kit for 10 apparatus S-breathing valve ambient air version, M20 thread – 10 singular items of each of #1/7-9/13/14/17	460 190 671

S-FACE MASK AMBIENT AIR VERSION, BLACK

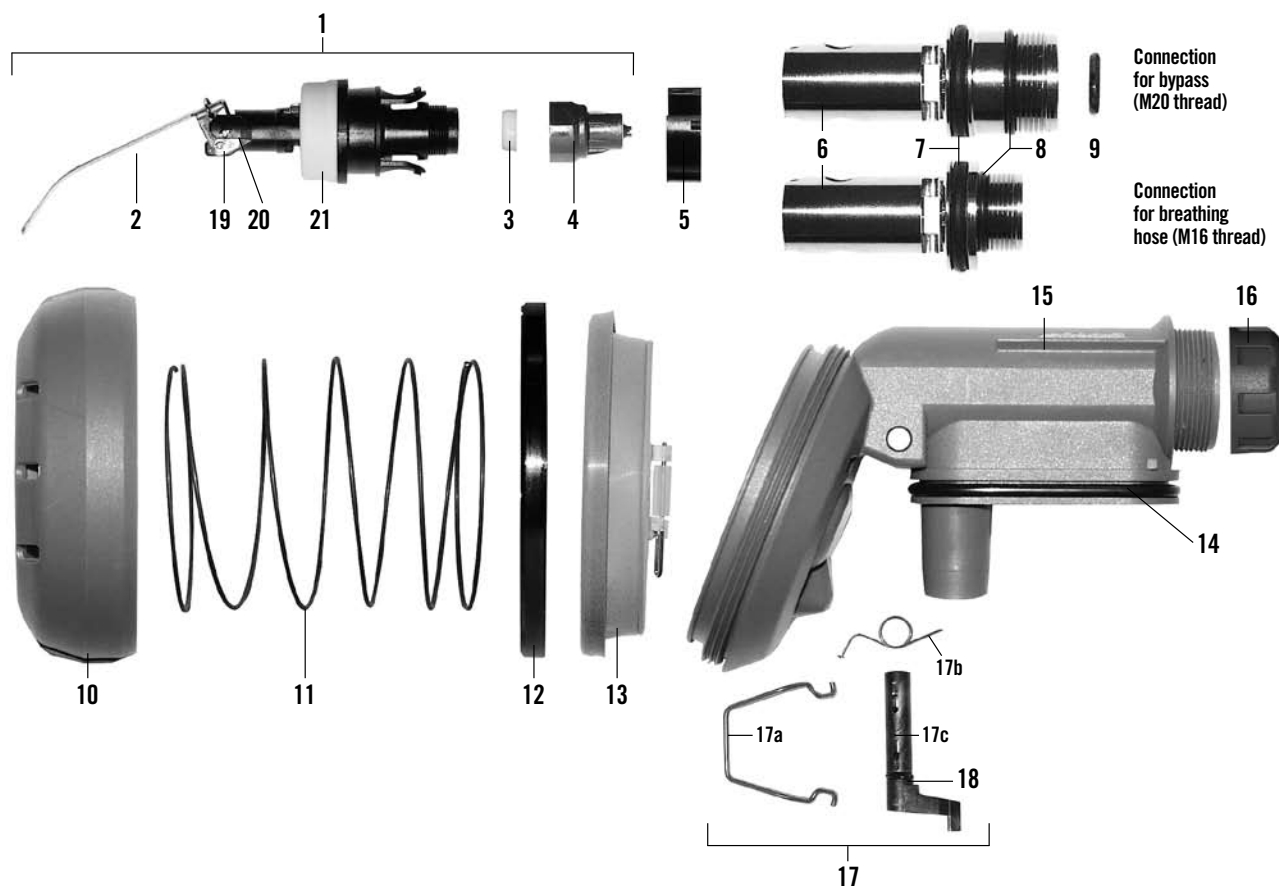


#	DESCRIPTION	ORDERING NO.	NOTES
1	a. Inner mask, std size mask b. — —, small size mask c. — —, extra large size mask d. — —, silicone, std size mask	95 002-52 95 002-52 96 756-52 96 756-53	
2	Non-return valve disc	336 890 132	10 pack
3	Non-return valve seat	96 026-52	
4	a. Inner mask Assy, std size mask b. — —, small size mask c. — —, extra large size mask d. — —, silicone, std size mask	460 190 827 460 190 827 460 190 658 460 190 828	
5	Protective net	460 190 149	
6	O-ring	336 190 790	10 pack
7	Speech cone Assy	460 190 655	
8	Inner mask plate Assy	460 190 019	Incl. #9/24/25
9	Non-return flap	460 190 072	5 pack
10	a. Head harness Assy black b. — —	460 190 829 95 612-51	Type A, #11-13 Hairnet
11	Top strap	460 190 004	Type A
12	Head harness, black	95 010-52	Type A
13	a. Buckle Assy, black b. — —	460 190 830 460 190 831	Type A, 4 pcs. Type B, 5 pcs.
14	a. Head harness b. — —	460 190 375 460 190 352	Type B Hairnet
15	a. Visor b. — —, hardcoated c. — —, hardcoated, anti-fog	460 190 350 460 190 351 96 701-51	
16a	Mask body Assy, black b. — —, silicone, black c. Mask body Assy, std size, black d. — —, small size, black e. — —, extra large size, black f. — —, silicone, std size, black	460 190 832 460 190 833 460 190 659 460 190 834 460 190 835 460 190 836	Type A Type A Type B Type B Type B Type B

#	DESCRIPTION	ORDERING NO.	NOTES
17	External speech cone	460 190 655	Incl. #18
18 a.	Hand screw	460 190 148	compl.
18 b.	Pivot bushing 10-pack	460 190 287	10 pack
18 c.	Washer 10-pack	460 190 288	10 pack
18 d.	Screw	460 190 289	10-pack
19	Exhalation valve disc	460 190 011	5 pack
20	O-ring	460 190 071	10 pack
21	Exhalation valve Assy	460 190 656	
22	a. Visor frame Assy b. — —	460 190 837 460 190 519	Type A Type B
23	Screw	336 190 409	10 pack
24	Locking plate	460 190 223	10 pack
25	Screw	460 190 239	10 pack
26	Indicator arm, black	460 190 805	
27	Neck strap, black	99 487-52	
28	Locking pin	460 190 374	5 pack
29	Speech cone	336 190 773	Incl. #6

#	DESCRIPTION	ORDERING NR.
A	Service kit for 1 apparatus S-face mask ambient air version — 1 singular item of each of #6/9/19/20 — 2 singular items of each of #2	460 190 324
B	Service kit for 10 apparatus S-face mask ambient air version — 10 singular item of each of #6/9/19/20 — 20 singular items of each of #2	460 190 669

S-BREATHING VALVE AMBIENT AIR VERSION, BLACK

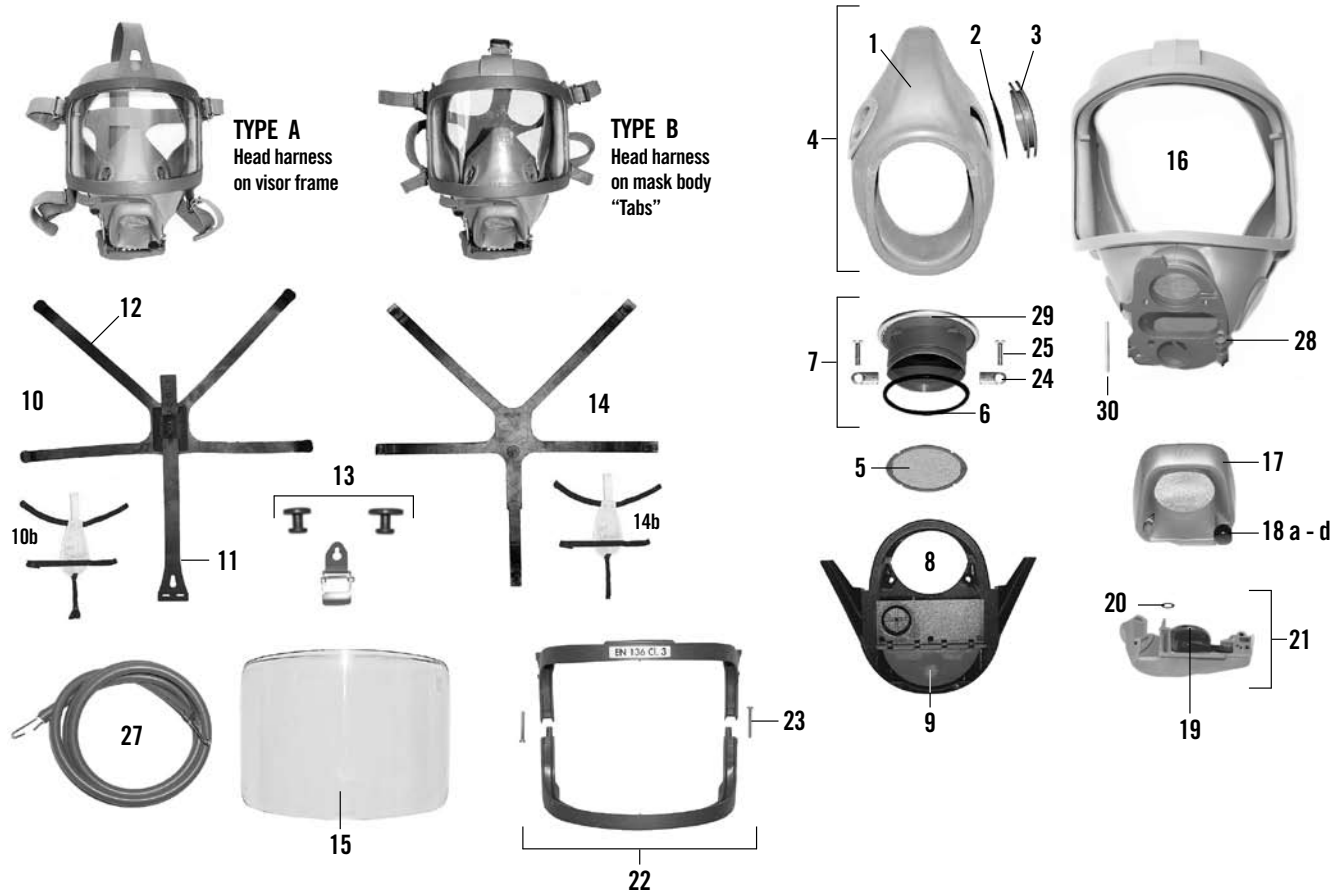


#	DESCRIPTION	ORDERING NO.	NOTES
• a.	S-Breathing valve, M16, black	95 080-12	M16 thread
b.	— —, M20, black	95 080-11	M20 thread
1	Valve insert	460 190 222	
2	Lever Assy	460 190 348	
3	Balancing diaphragm	460 190 028	5 pack
4	Valve cone	336 890 129	
5	Locking ring	460 190 068	5 pack
6	a. Connection nipple, M20	460 190 241	
b.	— —, M16	460 190 242	
7	O-ring	336 190 227	10 pack
8	a. O-ring, M20	460 190 080	10 pack
b.	— —, M16	336 190 228	10 pack
9	O-ring	460 190 057	10 pack
10	Cover	95 061-52	5 pack
11	Positive pressure spring	460 190 022	5 pack
12	Diaphragm ring	460 190 308	10 pack

#	DESCRIPTION	ORDERING NO.	NOTES
13	Diaphragm Assy	460 190 021	
14	O-ring	460 190 023	10 pack
15	Valve housing	460 190 663	Incl. #10/14/16/17
16	Locking nut	460 190 516	5 pack
17	Lifting arm Assy	460 190 150	Incl. #18
18	O-ring	336 190 225	10 pack
19	Pin	460 190 151	
20	Locking spring	460 190 152	10 pack
21	Sealing sleeve	460 190 027	5 pack

#	SERVICE KIT	ORDERING NO.
A	Service kit for 1 apparatus S-breathing valve ambient air version, M16 thread – 1 singular item of each of #1/7/8/13/14/17	460 190 377
B	Service kit for 10 apparatus S-breathing valve ambient air version, M16 thread – 10 singular items of each of #1/7/8/13/14/17	460 190 670
C	Service kit for 1 apparatus S-breathing valve ambient air version, M20 thread – 1 singular item of each of #1/7-9/13/14/17	460 190 347
D	Service kit for 10 apparatus S-breathing valve ambient air version, M20 thread – 10 singular items of each of #1/7-9/13/14/17	460 190 671

S-FACE MASK FIRST BREATH VERSION, GREY

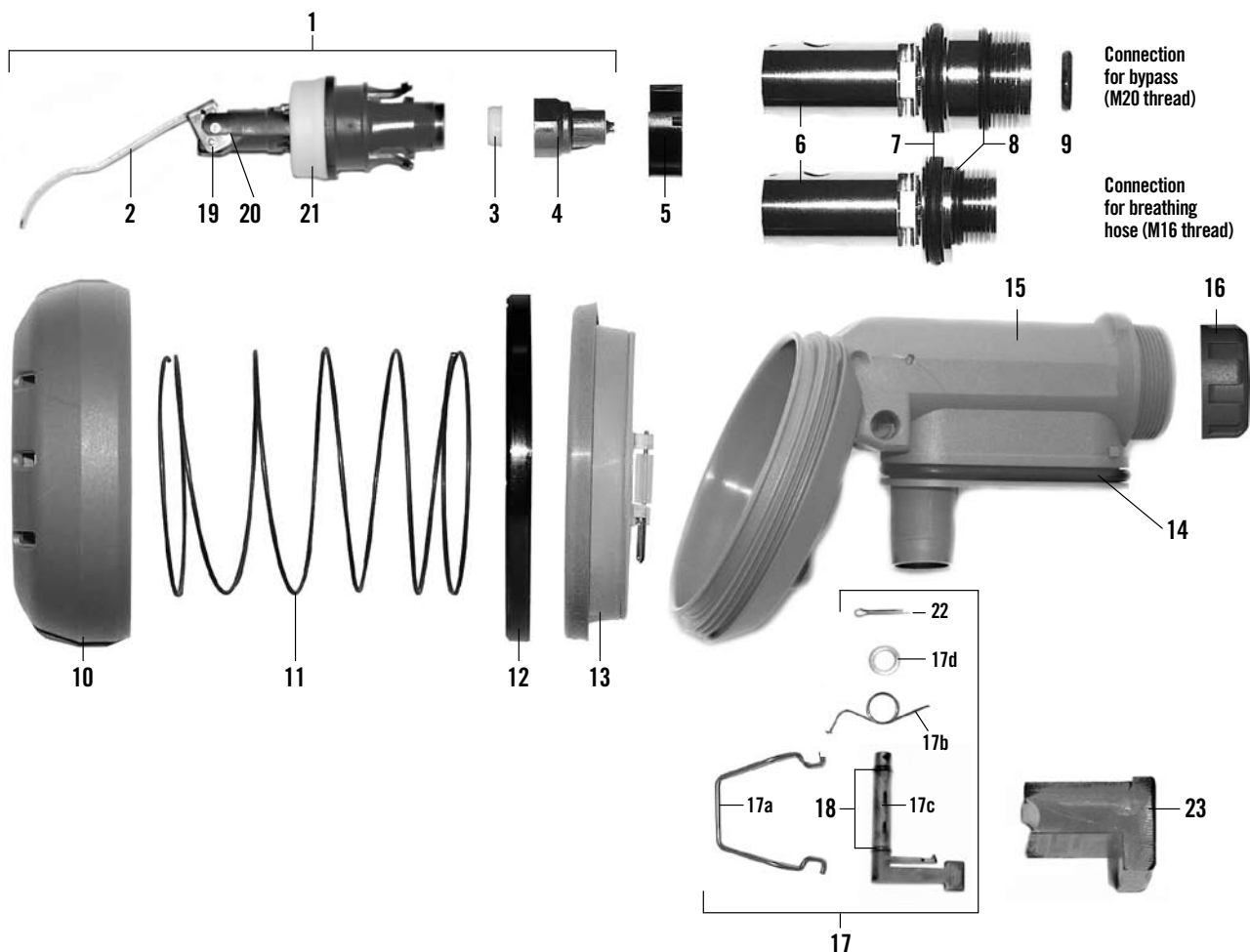


#	DESCRIPTION	ORDERING NO.	NOTES
1	a. Inner mask, std size mask	460 190 016	
	b. — —, small size mask	460 190 605	
	c. — —, extra large size mask	96 756-51	
	d. — —, silicone, std size mask	95 012-51	
2	Non-return valve disc	460 190 014	10 pack
3	Non-return valve seat	460 190 015	
4	a. Inner mask Assy, std size mask	460 190 263	
	b. — —, small size mask	460 190 606	
	c. — —, extra large size mask	460 190 341	
	d. — —, silicone, std size mask	460 190 349	
5	Protective net	460 190 149	
6	O-ring	336 190 790	10 pack
7	Speech cone Assy	460 190 013	
8	Inner mask plate	460 190 019	Incl. #9/24/25
9	Non-return flap	460 190 072	5 pack
10	a. Head harness Assy	460 190 002	Type A, #11-13
	b. — —	95 612-51	Hairnet
11	Top strap	460 190 004	Type A
12	Head harness	460 190 003	Type A
13	a. Buckle Assy	460 190 005	Type A, 4 pcs.
	b. — —	460 190 346	Type B, 5 pcs.
14	a. Head harness	460 190 375	Type B
	b. — —	460 190 352	Hairnet
15	a. Visor	460 190 350	
	b. — —, hardcoated	460 190 351	
	c. — —, hardcoated, anti-fog	96 701-51	
16a.	Mask body Assy	460 190 619	Type A
	b. — —, std size	460 190 615	Type B
	c. — —, small size	460 190 616	Type B
	d. — —, extra large size	460 190 617	Type B
	e. — —, silicone, std size	460 190 618	Type B

#	DESCRIPTION	ORDERING NO.	NOTES
17	External speech cone	460 190 614	Incl. #18
18 a.	Hand screw	460 190 148	compl.
	b. Pivot bushing 10-pack	460 190 287	10 pack
	c. Washer 10-pack	460 190 288	10 pack
	d. Screw	460 190 289	10-pack
19	Exhalation valve disc	460 190 011	5 pack
20	O-ring	460 190 071	10 pack
21	Exhalation valve Assy	460 190 613	
22	a. Visor frame Assy	460 190 009	Type A
	b. — —	460 190 297	Type B
23	Screw	336 190 409	10 pack
24	Locking plate	460 190 223	10 pack
25	Screw	460 190 239	10 pack
26	Not used for first breath version		
27	Neck strap	460 190 008	
28	Locking pin	460 190 374	5 pack
29	Speech cone	336 190 773	Incl. #6
30	Locking pin	97 010-51	5 pack

#	SERVICE KIT	ORDERING NR.
A	Service kit for 1 apparatus S-face mask first breath version — 1 singular item of each of #6/9/19/20 — 2 singular items of each of in #2	460 190 324
B	Service kit for 10 apparatus S-Face mask first breath version — 10 singular item of each of #6/9/19/20 — 20 singular items of each of in #2	460 190 669

S-BREATHING VALVE FIRST BREATH VERSION, GREY

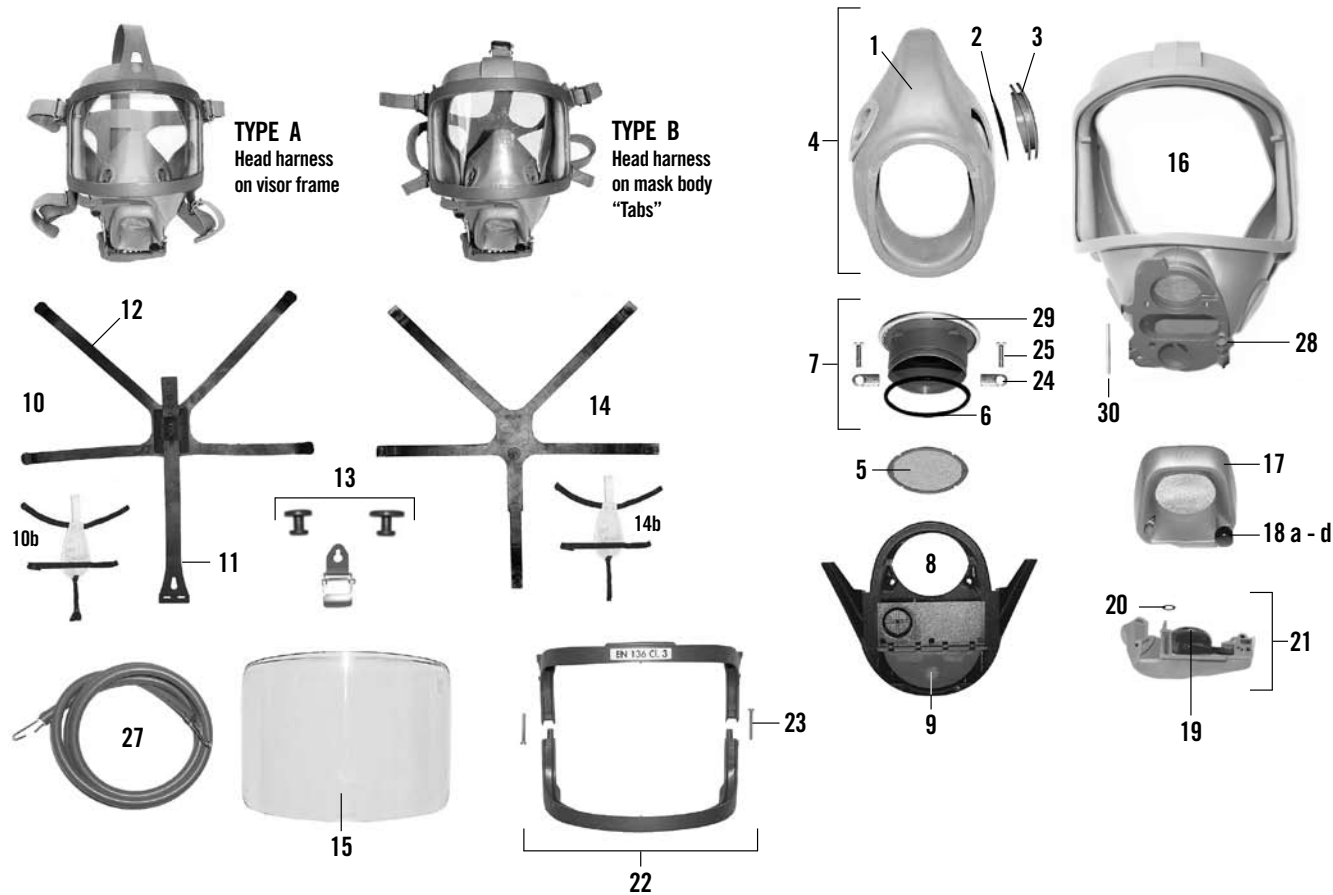


#	DESCRIPTION	ORDERING NO.	NOTES
• a.	S-Breathing valve, M16	95 080-04	M16 thread
b.	— —, M20	95 080-05	M20 thread
1	Valve insert	460 190 607	
2	Lever Assy	460 190 608	
3	Balancing diaphragm	460 190 028	5 pack
4	Valve cone	336 890 129	
5	Locking ring	460 190 068	5 pack
6	a. Connection nipple, M20	460 190 241	
	b. — —, M16	460 190 242	
7	O-ring	336 190 227	10 pack
8	a. O-ring, M20	460 190 080	10 pack
	b. — —, M16	336 190 228	10 pack
9	O-ring	460 190 057	10 pack
10	Cover	95 061-51	5 pack
11	Positive pressure spring	460 190 022	5 pack
12	Diaphragm ring	460 190 308	10 pack
13	Diaphragm Assy	460 190 021	

#	DESCRIPTION	ORDERING NO.	NOTES
14	O-ring	460 190 023	10 pack
15	Valve housing	460 190 609	Incl. #10/14/16/17
16	Locking nut	346 190 201	5 pack
17	Lifting arm Assy	460 190 610	Incl. #18&22
18	O-ring	336 190 225	10 pack
19	Pin	460 190 151	10 pack
20	Locking spring	460 190 152	10 pack
21	Sealing sleeve	460 190 027	5 pack
22	Split pin	336 190 380	10 pack
23	Assembly tool for lifting arm	97 379-01	

#	SERVICE KIT	ORDERING NO.
A	Service kit for 1 apparatus S-Breathing Valve First Breath Version, M16 thread – 1 singular item of each of #1/7/8/13/14/17	460 190 611
B	Service kit for 10 apparatus S-Breathing Valve First Breath Version, M16 thread – 10 singular items of each of #1/7/8/13/14/17	460 190 672
C	Service kit for 1 apparatus S-Breathing Valve First Breath Version, M20 thread – 1 singular item of each of #1/7-9/13/14/17	460 190 612
D	Service kit for 10 apparatus S-Breathing Valve First Breath Version, M20 thread – 10 singular items of each of #1/7-9/13/14/17	460 190 673

S-FACE MASK FIRST BREATH VERSION, BLACK

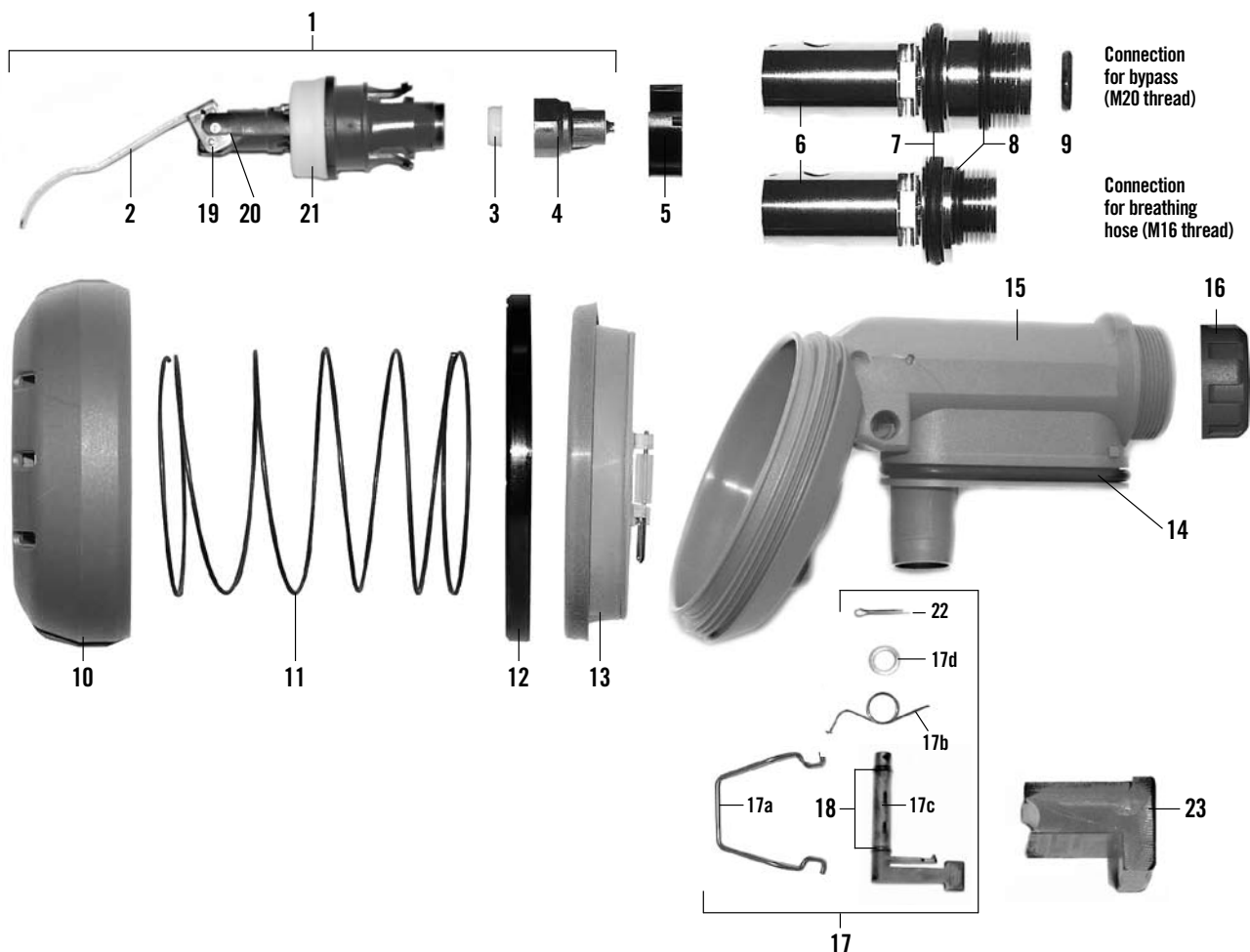


#	DESCRIPTION	ORDERING NO.	NOTES
1	a. Inner mask, std size mask	95 002-52	
	b. — —, small size mask	95 605-52	
	c. — —, extra large size mask	96 756-52	
	d. — —, silicone, std size mask	96 756-53	
2	Non-return valve disc	460 190 014	10 pack
3	Non-return valve seat	96 026-52	
4	a. Inner mask Assy, std size mask	460 190 827	
	b. — —, small size mask	460 190 827	
	c. — —, extra large size mask	460 190 658	
	d. — —, silicone, std size mask	460 190 828	
5	Protective net	460 190 149	
6	O-ring	336 190 790	10 pack
7	Speech cone Assy	460 190 655	
8	Inner mask plate	460 190 019	Incl. #9/24/25
9	Non-return flap	460 190 072	5 pack
10	a. Head harness Assy	460 190 829	Type A, #11-13
	b. — —	95 612-51	Hairnet
11	Top strap	460 190 004	Type A
12	Head harness	95 010-52	Type A
13	a. Buckle Assy	460 190 830	Type A, 4 pcs.
	b. — —	460 190 831	Type B, 5 pcs.
14	a. Head harness	460 190 375	Type B
	b. — —	460 190 352	Hairnet
15	a. Visor	460 190 350	
	b. — —, hardcoated	460 190 351	
	c. — —, hardcoated, anti-fog	96 701-51	
16a.	Mask body Assy	460 190 838	Type A
	b. — —, std size	460 190 839	Type B
	c. — —, small size	460 190 659	Type B
	d. — —, extra large size	460 190 840	Type B
	e. — —, silicone, std size	460 190 841	Type B

#	DESCRIPTION	ORDERING NO.	NOTES
17	External speech cone	460 190 655	Incl. #18
18 a.	Hand screw	460 190 148	compl.
	b. Pivot bushing 10-pack	460 190 287	10 pack
	c. Washer 10-pack	460 190 288	10 pack
	d. Screw	460 190 289	10-pack
19	Exhalation valve disc	460 190 011	5 pack
20	O-ring	460 190 071	10 pack
21	Exhalation valve Assy	460 190 656	
22	a. Visor frame Assy	460 190 837	Type A
	b. — —	460 190 519	Type B
23	Screw	336 190 409	10 pack
24	Locking plate	460 190 223	10 pack
25	Screw	460 190 239	10 pack
26	Not used for first breath version		
27	Neck strap	99 478-52	
28	Locking pin	460 190 374	5 pack
29	Speech cone	336 190 773	Incl. #6
30	Locking pin	97 010-51	5 pack

#	SERVICE KIT	ORDERING NR.
A	Service kit for 1 apparatus S-face mask first breath version — 1 singular item of each of #6/9/19/20 — 2 singular items of each of in #2	460 190 324
B	Service kit for 10 apparatus S-Face mask first breath version — 10 singular item of each of #6/9/19/20 — 20 singular items of each of in #2	460 190 669

S-BREATHING VALVE FIRST BREATH VERSION, BLACK

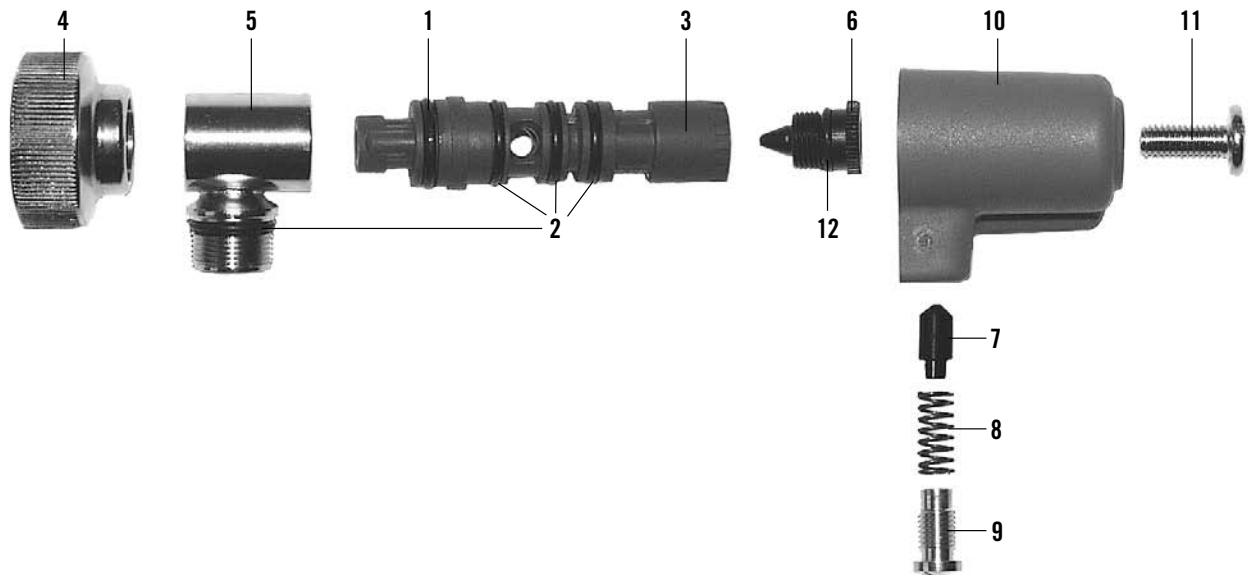


#	DESCRIPTION	ORDERING NO.	NOTES
• a.	S-Breathing valve, M16	95 080-14	M16 thread
b.	— —, M20	95 080-13	M20 thread
1	Valve insert	460 190 607	
2	Lever Assy	460 190 608	
3	Balancing diaphragm	460 190 028	5 pack
4	Valve cone	336 890 129	
5	Locking ring	460 190 068	5 pack
6	a. Connection nipple, M20	460 190 241	
	b. — —, M16	460 190 242	
7	O-ring	336 190 227	10 pack
8	a. O-ring, M20	460 190 080	10 pack
	b. — —, M16	336 190 228	10 pack
9	O-ring	460 190 057	10 pack
10	Cover	95 061-52	5 pack
11	Positive pressure spring	460 190 022	5 pack
12	Diaphragm ring	460 190 308	10 pack
13	Diaphragm Assy	460 190 021	

#	DESCRIPTION	ORDERING NO.	NOTES
14	O-ring	460 190 023	10 pack
15	Valve housing	460 190 663	Incl. #10/14/16/17
17	Lifting arm Assy	460 190 610	Incl. #18&232
18	O-ring	336 190 225	10 pack
19	Pin	460 190 151	
20	Locking spring	460 190 152	10 pack
21	Sealing sleeve	460 190 027	5 pack
22	Split pin	336 190 380	10 pack
23	Assembly tool for lifting arm	97 379-01	

#	SERVICE KIT	ORDERING NO.
A	Service kit for 1 apparatus S-Breathing Valve First Breath Version, M16 thread – 1 singular item of each of #1/7/8/13/14/17	460 190 611
B	Service kit for 10 apparatus S-Breathing Valve First Breath Version, M16 thread – 10 singular items of each of #1/7/8/13/14/17	460 190 672
C	Service kit for 1 apparatus S-Breathing Valve First Breath Version, M20 thread – 1 singular item of each of #1/7-9/13/14/17	460 190 612
D	Service kit for 10 apparatus S-Breathing Valve First Breath Version, M20 thread – 10 singular items of each of #1/7-9/13/14/17	460 190 673

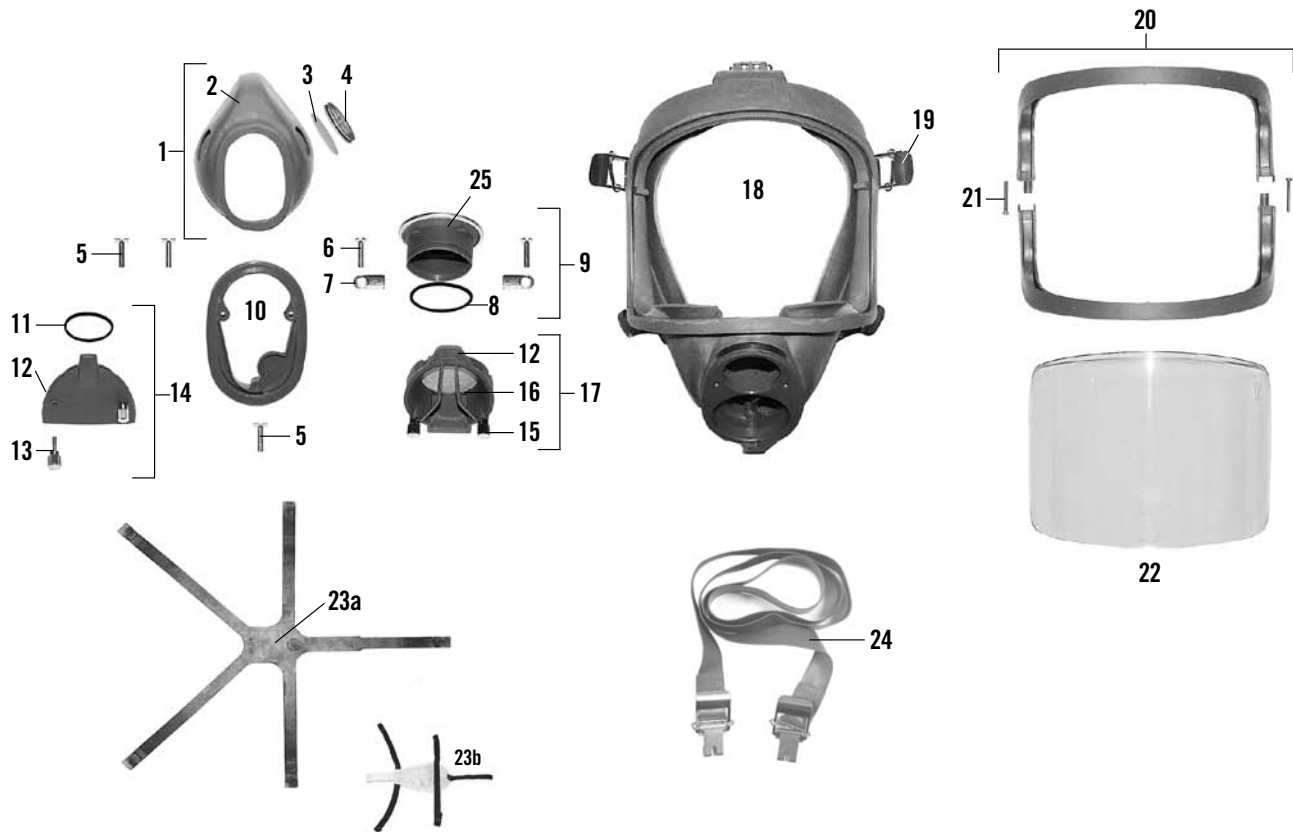
S-BYPASS



#	DESCRIPTION	ORDERING NO.	NOTES
•	S-Bypass	95 684-01	
1	O-ring	460 190 252	10 pack
2	O-ring	336 190 228	10 pack
3	Valve shaft	460 190 253	
4	Connection nut	460 190 254	
5	Connection house	460 190 255	
6	Valve spindle	460 190 256	
7	Plastic tip	460 190 257	
8	Spring	460 190 258	
9	Screw	460 190 259	
10	Bypass handle	460 190 260	
11	Screw	460 190 261	
12	O-ring	460 190 262	10 pack

#	SERVICE KIT	ORDERING NO.
A	Service kit for 1 apparatus S-bypass	460 190 328
	- 4 singular items of each of #2	
	- 1 singular item of each of #1&12	
B	Service kit for 10 apparatus S-bypass	460 190 674
	- 40 singular items of each of #2	
	- 10 singular items of each of #1&12	

SPIROMATIC FACE MASK

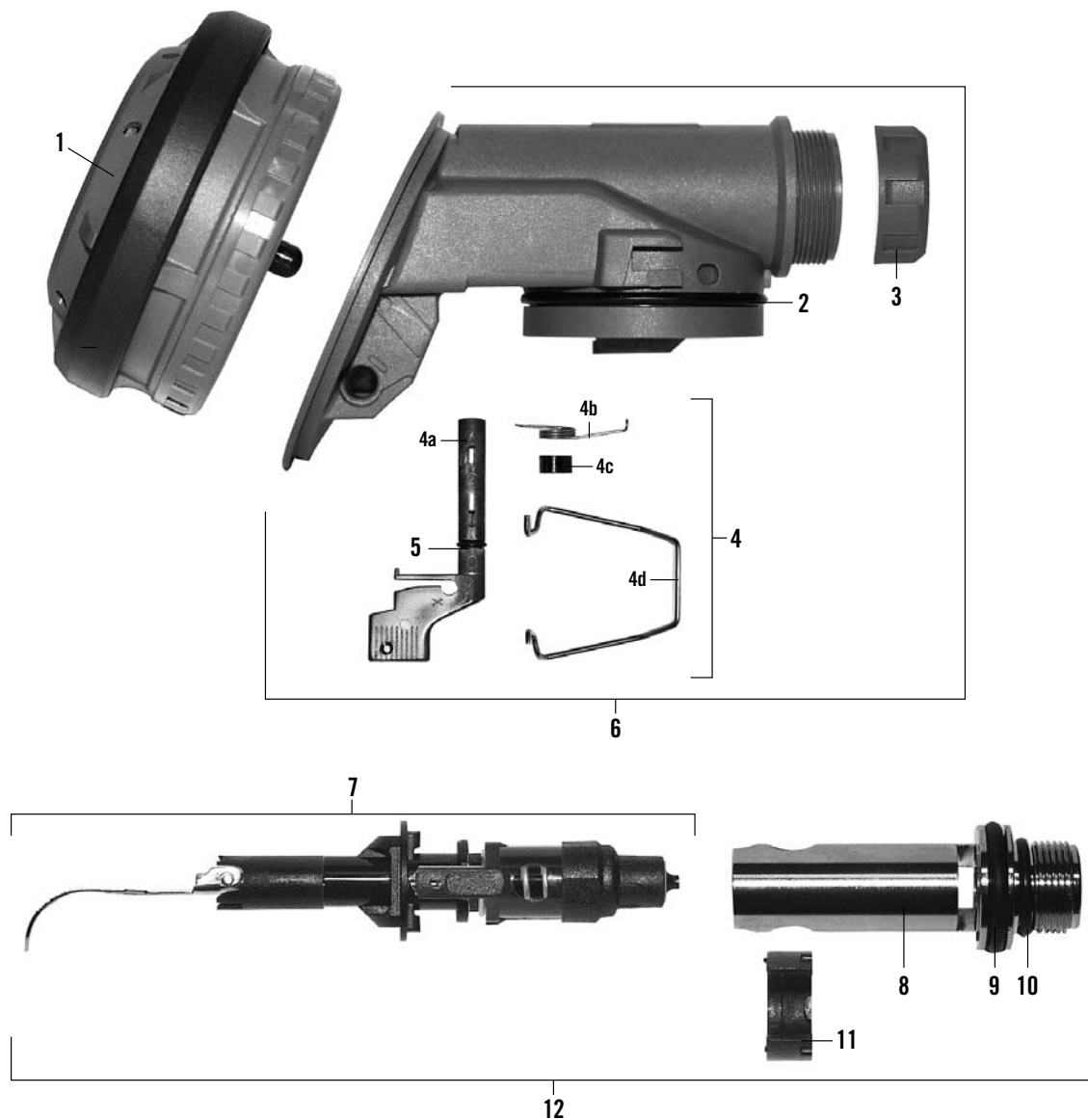


#	DESCRIPTION	ORDERING NO.	NOTES
1	a. Inner mask Assy	336 190 286	
	b. — —, silicone	336 190 458	
2	a. Inner mask	460 190 397	
	b. — —, silicone	460 190 643	
3	Non-return valve disc	336 190 264	10 pack
4	Non-return valve seat	460 190 221	10 pack
5	Screw	336 190 246	10 pack
6	Screw	460 190 276	10 pack
7	Locking plate	460 190 223	10 pack
8	O-ring	336 190 790	10 pack
9	Speech diaphragm assy.	460 190 013	
10	Inner mask plate	460 190 398	
11	O-ring	336 190 222	5 pack
12	Circlip	336 190 255	10 pack
13	Hand screw	460 190 300	10 pack
14	Blank cover	336 190 017	
15	Hand screw	460 190 399	10 pack
16	Protective clip	460 190 401	10 pack
17	External speech cone	460 190 400	
18	a. Mask body Assy	336 190 019	Incl. #24
	b. — —, silicone	336 190 457	Incl. #24
19	Buckle	336 190 263	3 pack
20	Visor frame Assy	336 190 110	
21	Screw	336 190 409	10 pack

#	DESCRIPTION	ORDERING NO.	NOTES
22	a. Visor	460 190 350	
	b. — —, laminated	96 701-51	
23	a. Head harness	460 190 402	
	b. — —, hairnet	460 190 352	
	c. Head harness, silicone	460 190 481	
24	Neck strap Assy	460 190 403	
25	Speech cone	336 190 773	Incl. #8

#	SERVICE KIT	ORDERING NR.
A	Service kit for 1 apparatus Spiromatic face mask, blank cover – 1 singular item of each of #11 – 2 singular items of each of #3	460 190 404
B	Service kit for 10 apparatus Spiromatic face mask, blank cover – 10 singular items of each of #11 – 20 singular items of each of #3	460 190 675
C	Service kit for 1 apparatus Spiromatic face mask, speech cone – 1 singular item of each of #8 – 2 singular items of each of #3	460 190 405
D	Service kit for 10 apparatus Spiromatic face mask, speech cone – 10 singular items of each of #8 – 20 singular items of each of #3	460 190 676

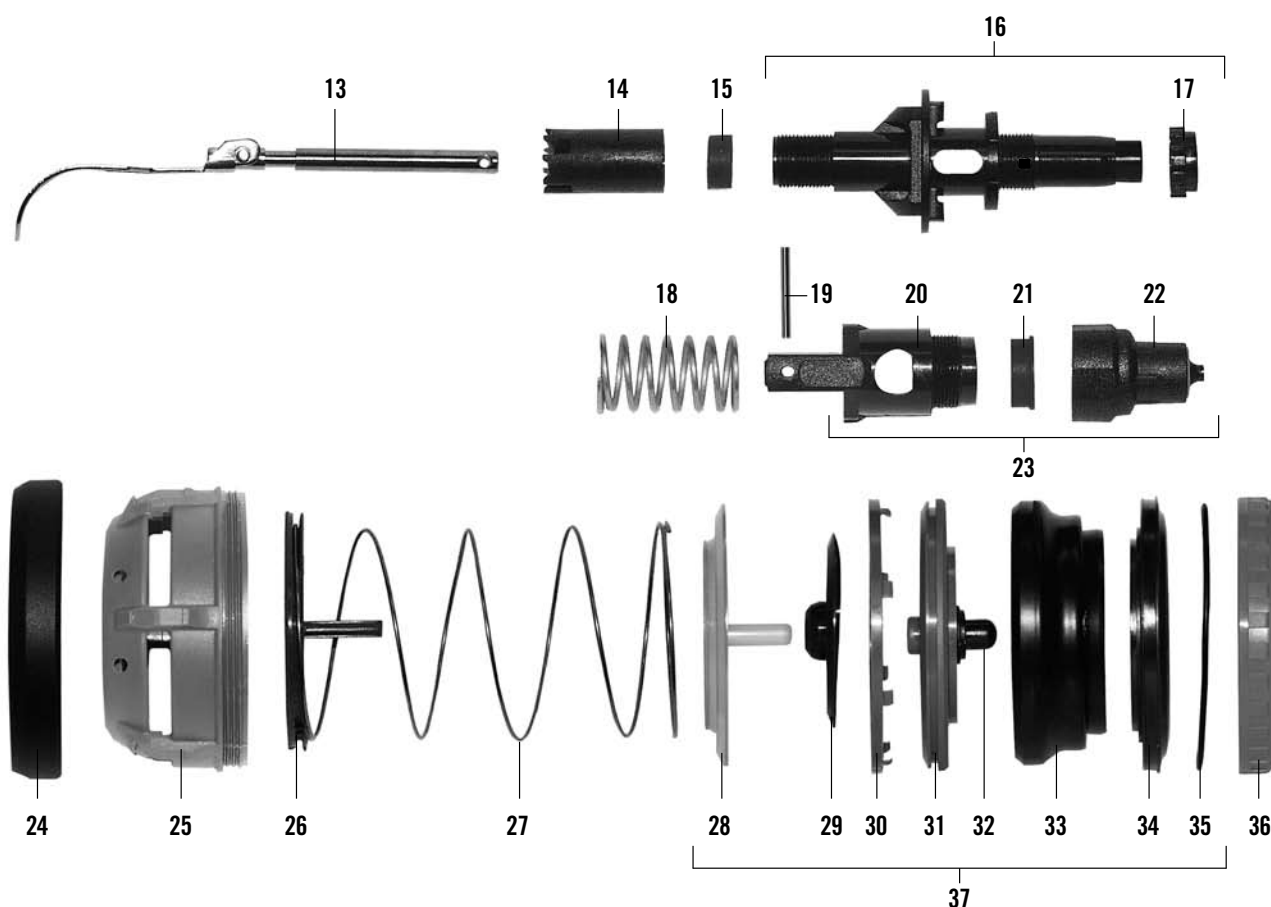
SPIROMATIC BREATHING VALVE



#	DESCRIPTION	ORDERING NO.	NOTES
•	Spiromatic breathing valve	336 190 002	
1	Positive pressure attachment	336 190 280	
2	O-ring	336 190 226	5 pack
3	Locking nut	346 190 201	5 pack
4	Lever Assy	336 190 142	
5	O-ring	336 190 225	10 pack
6	Valve housing	336 190 282	
7	Valve insert	460 190 146	
8	Connection nipple	460 190 396	
9	O-ring	336 190 227	10 pack
10	O-ring	336 190 228	10 pack
11	Retaining ring	346 190 198	10 pack
12	Valve insert Assy	336 190 281	

The SPIROMATIC BREATHING VALVE spare parts list continues on the next page.

SPIROMATIC BREATHING VALVE

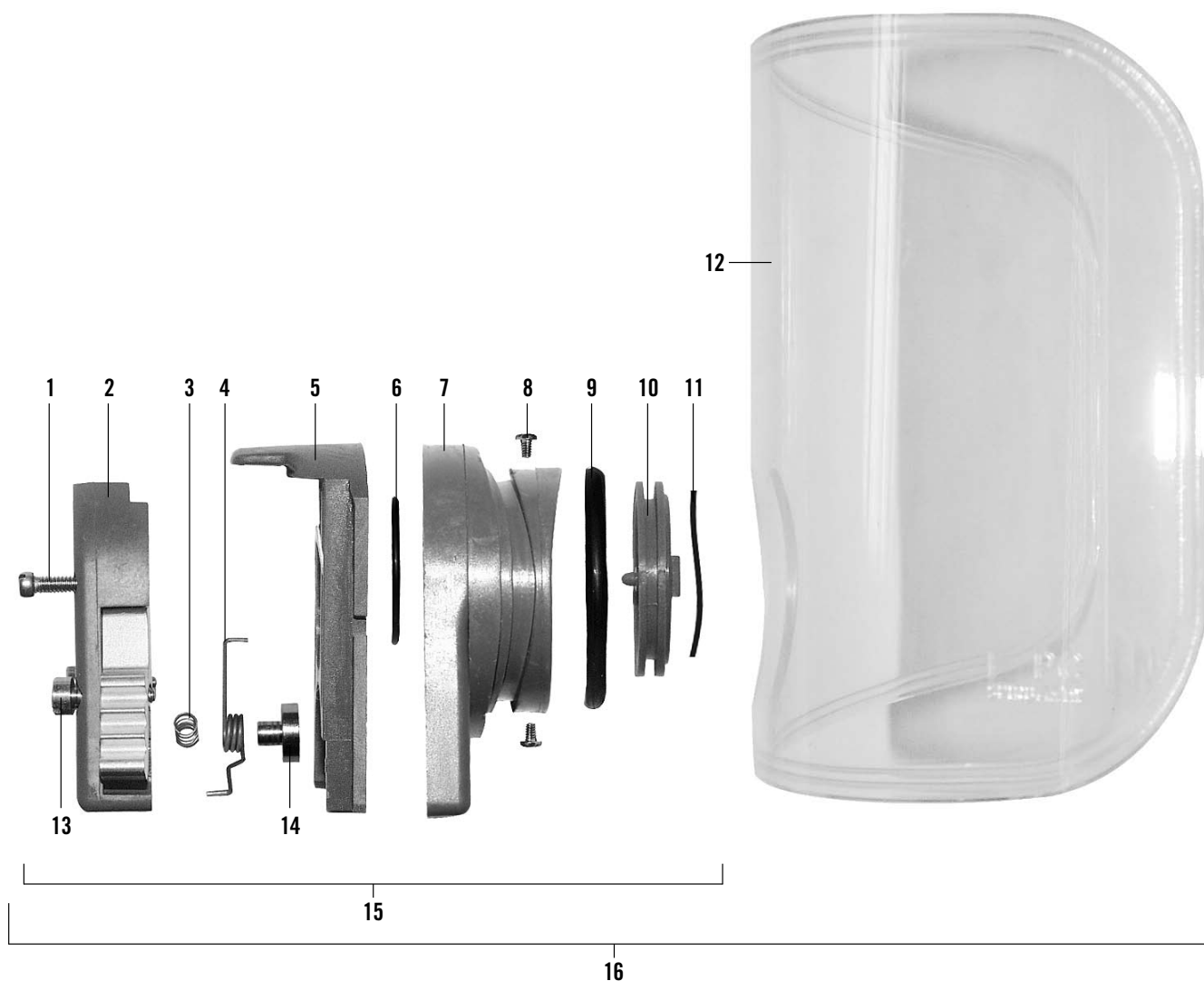


#	DESCRIPTION	ORDERING NO.	NOTES
13	Lever Assy	336 190 285	
14	Lever support	460 190 391	10 pack
15	Sealing sleeve	346 190 246	5 pack
16	Centre spindle	460 190 406	Incl. #17
17	Adjusting nut	346 190 247	5 pack
18	Sealing spring	460 190 407	10 pack
19	Pin		336 190 258 10 pack
20	Lifting spindle	460 190 408	
21	Balancing diaphragm	460 190 409	5 pack
22	Valve cone	336 190 064	
23	Sealing piston	336 190 284	
24	Shield ring	346 190 197	5 pack
25	Cover	460 190 411	
26	Guide disc	460 190 412	
27	Positive pressure spring	460 190 392	5 pack
28	Sealing disc	460 190 393	5 pack
29	Valve disc	346 190 196	5 pack

#	DESCRIPTION	ORDERING NO.	NOTES
30	Diaphragm ring	460 190 413	10 pack
31	Valve seat	460 190 394	
32	Guide pin	346 190 194	10 pack
33	Diaphragm	460 190 140	
34	Diaphragm holder	460 190 395	
35	O-ring	336 190 224	5 pack
36	Locking ring	346 190 193	5 pack
37	Diaphragm Assy	336 190 065	

#	SERVICE KIT	ORDERING NO.
A	Service kit for 1 apparatus Spiromatic breathing valve – 1 singular item of each of #2/4/7/9/10/37	460 190 416
B	Service kit for 10 apparatus Spiromatic breathing valve – 10 singular items of each of #2/4/7/9/10/37	460 190 677
C	Service kit for 1 apparatus Spiromatic breathing valve – 1 singular item of each of #2/5/9/10/15/21/22/29/33/35	460 190 417

SPIROHATCH



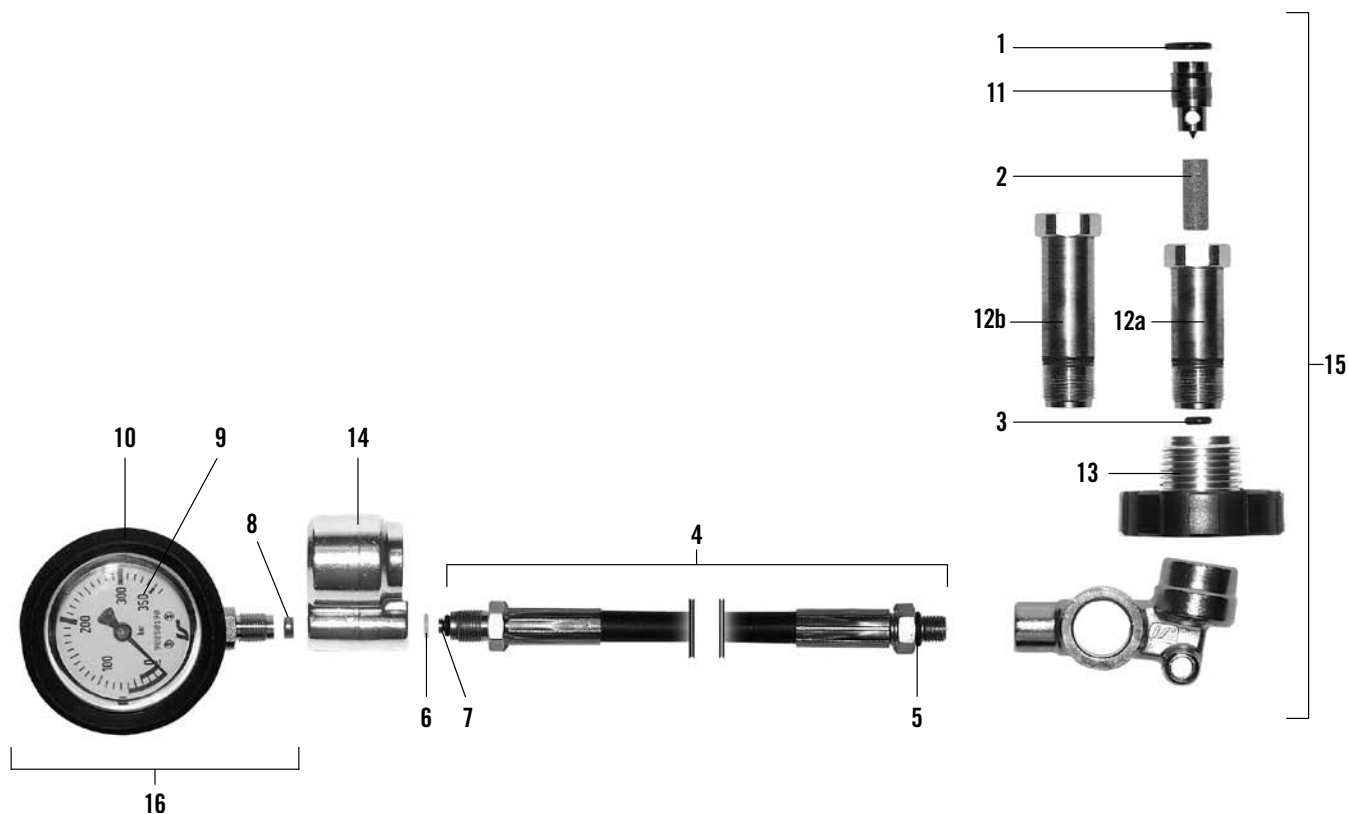
#	DESCRIPTION	ORDERING NR.	NOTES
1	Screw	460 190 454	10 pack
2	Main body Assy	336 890 332	*
3	Lever spring	460 190 455	5 pack
4	Spring	460 190 456	5 pack
5	Hatch slide Assy	336 890 334	*
6	O-ring	336 890 340	10 pack
7	Seat/lens adapter Assy	336 980 333	*
8	Screw	336 890 345	10 pack
9	O-ring	336 890 341	10 pack
10	Valve seat	460 190 487	5 pack
11	Non-return valve disc	336 190 264	10 pack
12	a. Visor	460 190 448	
	b. — —, hardcoated	460 190 447	
13	Screw, shoulder	336 890 343	5 pack
14	Spring retainer	460 190 488	5 pack

#	DESCRIPTION	ORDERING NR.	NOTES
15	Spirohatch Assy	336 890 256	
16	a. Spirohatch with visor	336 190 998	
	b. — —, hardcoated	336 890 255	

#	SERVICE KIT	ORDERING NO.
A	Service kit for 1 apparatus Spirohatch — 1 singular item of each of #9/11	460 190 326
B	Service kit for 10 apparatus Spirohatch — 10 singular items of each of #9/11	460 190 678

* Not available separately

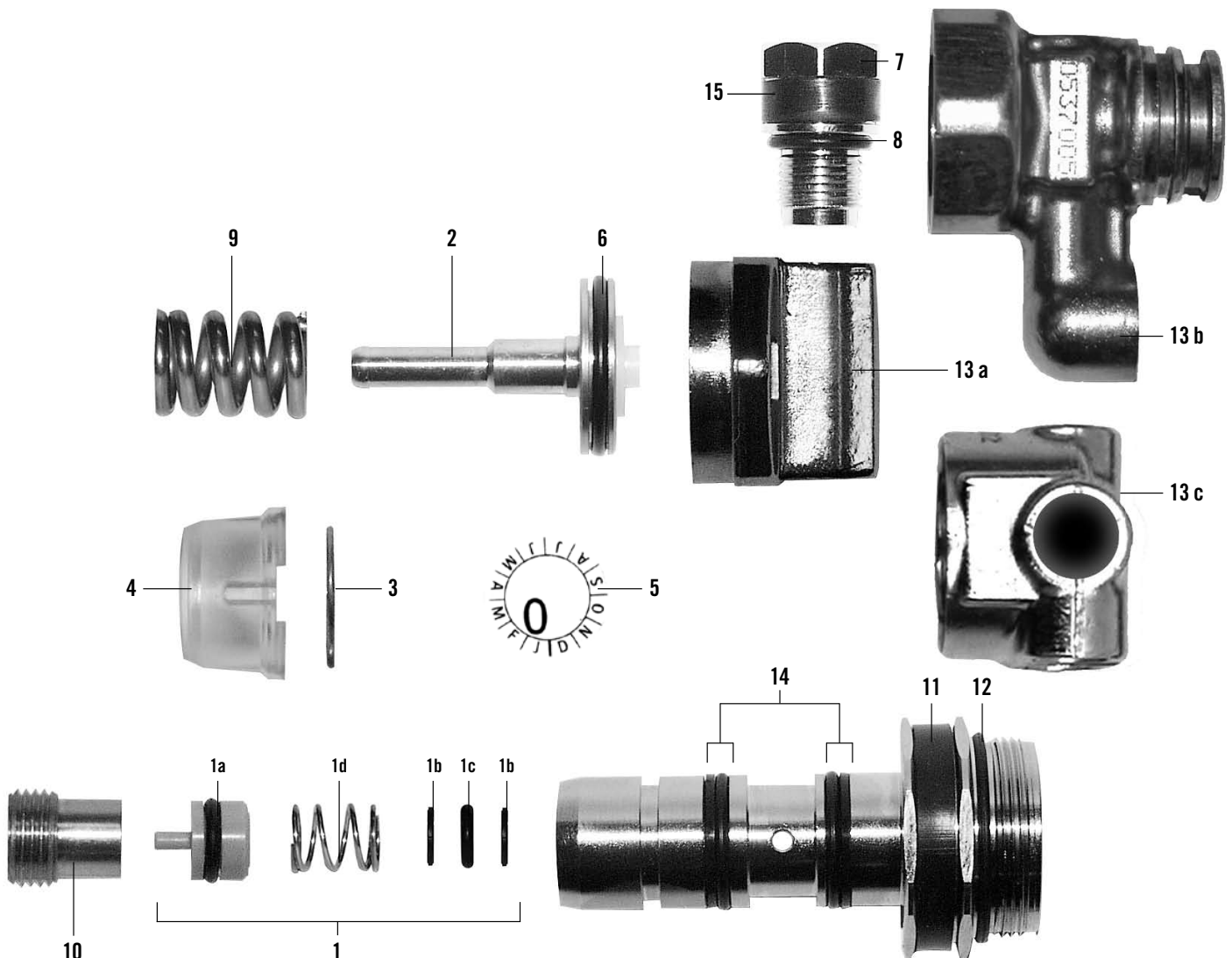
MANIFOLD



#	DESCRIPTION	ORDERING NO.	NOTES
	• Manifold unit	346 190 345	
	• Manifold unit with long connection nipple	96 214	
	• Manifold unit with extended high pressure hose	97 040	
1	a. O-ring	336 190 272	10 pack
	b. — —	460 190 237	100 pack
2	a. Inlet filter	346 190 643	10 pack
	b. — —	346 190 644	100 pack
3	O-ring	336 190 232	10 pack
4	a. High pressure hose	460 190 380	
	b. High pressure hose, extended	96 529-51	
5	O-ring	336 190 312	10 pack
6	Friction washer	460 190 192	5 pack
7	O-ring	336 190 235	10 pack
8	Gasket set	336 190 159	
9	Pressure gauge	460 190 381	Incl. #8
10	Rubber cover	96 548-51	
11	Nipple	460 190 382	

#	DESCRIPTION	ORDERING NO.	NOTES
12	a. Connection nipple	460 190 383	
	b. — —, long	460 190 384	
13	Hand wheel	460 190 385	
14	Whistle manifold	95 905	
15	a. Regulator manifold	346 190 291	
	b. — —, long connection nipple	96 443	
16	Pressure gauge Assy	336 190 158	Incl. #8-10
#	SERVICE KIT	ORDERING NO.	
A	Service kit for 1 apparatus Manifold — 1 singular item of each of #1/2/5-7	460 190 321	
B	Service kit for 10 apparatus Manifold — 10 singular items of each of #1/2/5-7	460 190 679	
C	Service kit for 1 apparatus, HP connection — 1 singular items of each of #1/2	460 190 711	

PRESSURE REGULATOR



#	DESCRIPTION	ORDERING NR.	NOTES
•	Pressure regulator	346 190 401	Not incl. #3-4
•	Pressure regulator	95 141-02	Not incl. #3-4
•	Pressure regulator	98 954-01	Not incl. #3-4
1	Valve seat set	346 190 023	
2	Piston	460 190 386	
3	Locking clip	346 190 293	10 pack
4	Protective cover	346 190 294	10 pack
5	Sealing label	346 190 295	25 pack
6	O-ring	346 190 022	10 pack
7	Safety valve	460 190 387	Incl. #8
8	O-ring	336 190 311	10 pack
9	Spring	346 190 026	5 pack
10	Adjusting screw	460 190 388	5 pack
11	Protective band	460 190 201	5 pack
12	O-ring	346 190 024	10 pack
13 a.	Regulator cover, single outlet	460 190 389	
13 b.	Regulator cover, twin outlet	88 193-54	
13 c.	Regulator cover,	98 946-01	
14 a.	O-ring and back-up rings	460 190 198	10 pack
b.	— —	460 190 199	50 pack
15	Protective band	346 190 053	10 pack

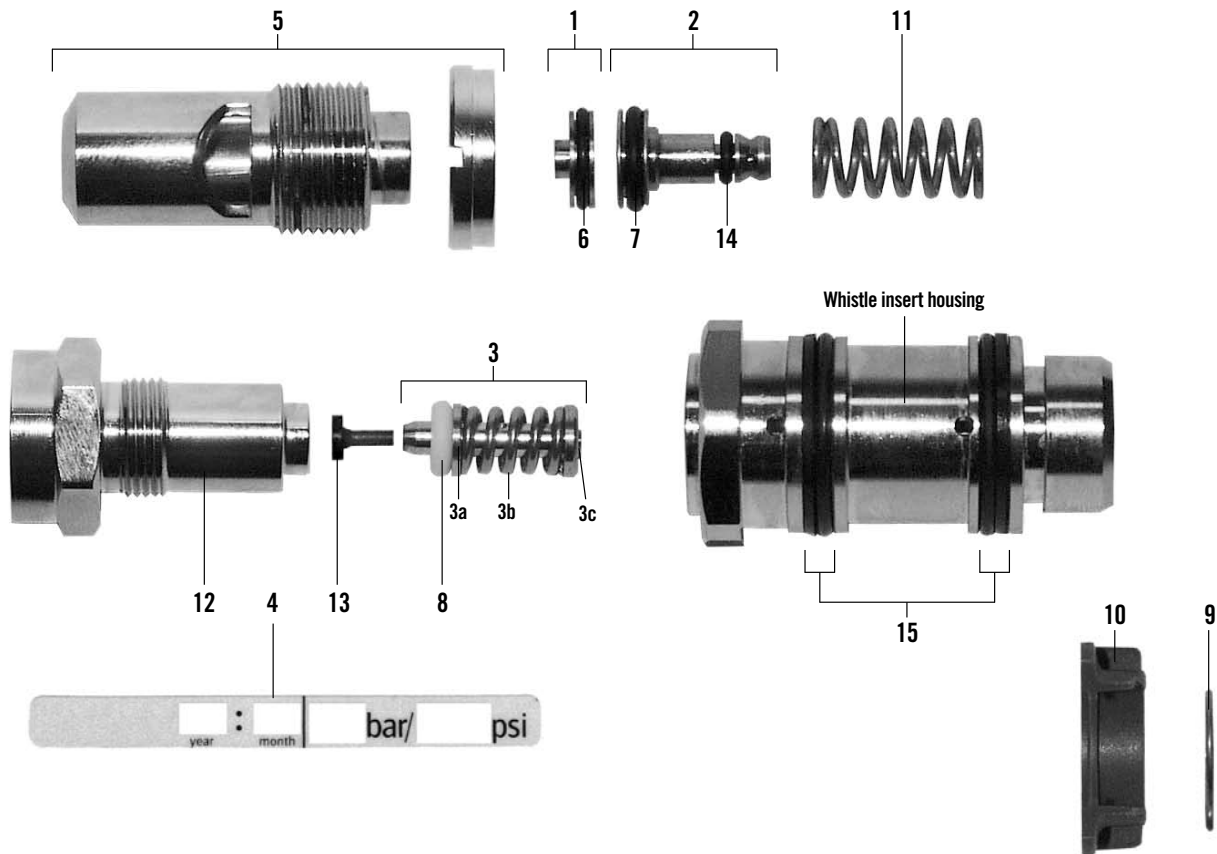
#	SERVICE KIT	ORDERING NR.
A	Service kit for 1 apparatus Pressure regulator – 1 singular item of each of #1/3-6/8/11/12 – 2 singular items of each of #14	460 190 322
B	Service kit for 10 apparatus Pressure regulator – 10 singular items of each of #1/3-6/8/11/12 – 20 singular items of each of #14	96 867

NOTE!

For regulators delivered before the beginning of 1999 with turquoise back-up rings – or regulators without back-up rings – the following part numbers apply:

#	DESCRIPTION	ORDERING NR.	NOTES
11	Protective band	346 190 187	5 pack
14 a.	O-ring and back-up rings	460 190 135	20 pack
b.	— —	460 190 136	100 pack

WHISTLE INSERT ASSEMBLY



#	DESCRIPTION	ORDERING NO.	NOTES
•	Whistle insert Assy (55 bar)	346 190 404	Not incl. #9-10
1	Nozzle with O-ring	346 190 220	Incl. #6
2	Regulating piston Assy	346 190 219	Incl. #7/14
3	Piston assembly	346 190 216	Incl. #8
4	Sealing label	346 190 296	20 pack
5	Whistle Assy	346 190 221	
6	O-ring	346 190 251	10 pack
7	O-ring	346 190 249	10 pack
8	O-ring	336 190 240	5 pack
9	Locking clip	346 190 293	10 pack
10	Retaining ring	460 190 299	10 pack
11	Spring	346 190 218	5 pack
12	Whistle cylinder	346 190 248	
13	Sealing cone	346 190 217	10 pack
14	O-ring	460 190 269	10 pack
15	O-ring and back-up rings	460 190 200	10 pack

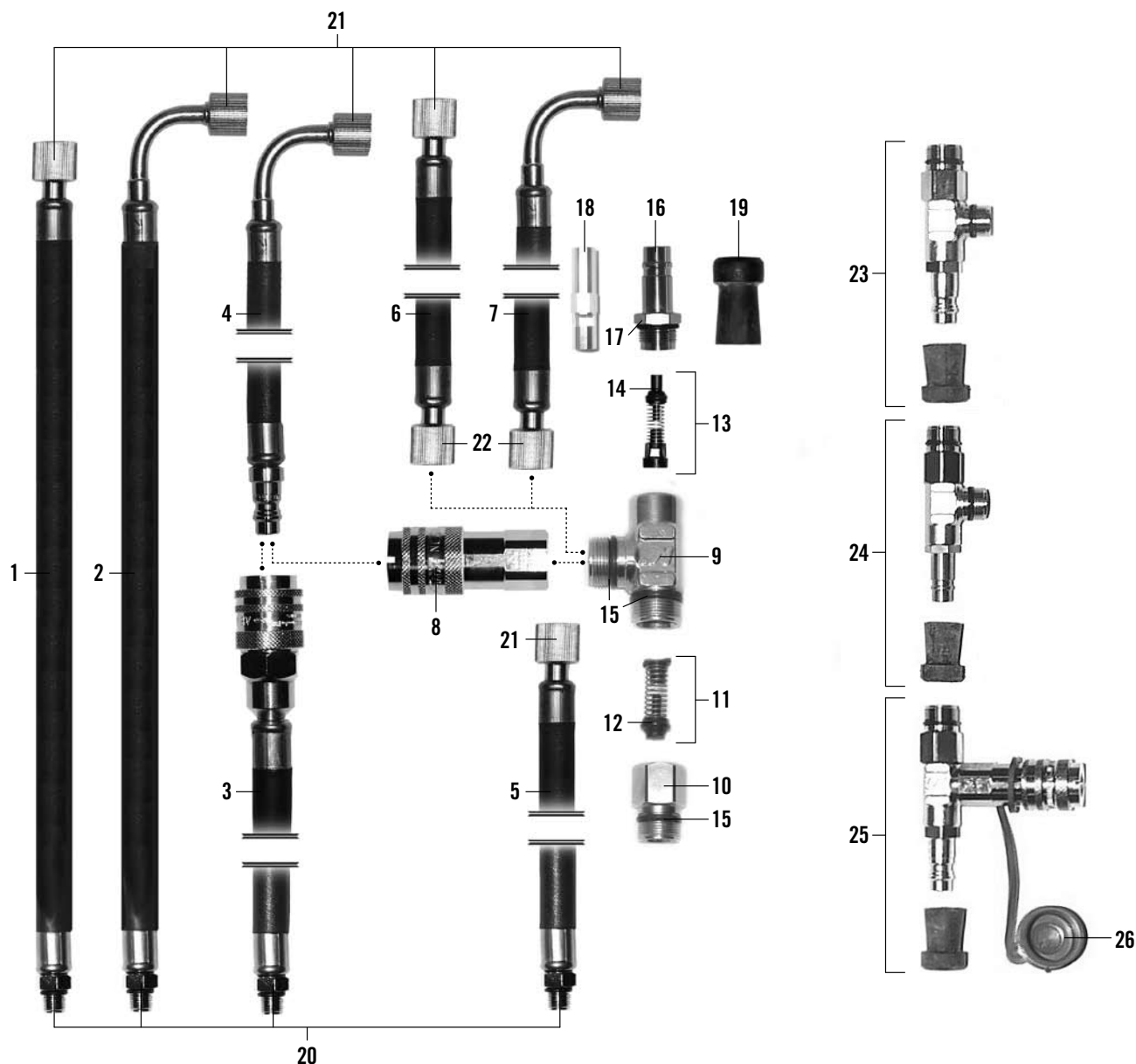
#	SERVICE KIT	ORDERING NO.
A	Service kit for 1 apparatus Whistle insert assembly – 1 singular item of each of #4/6-10/13/14 – 2 singular items of each of in #15	460 190 323
B	Service kit for 10 apparatus Whistle insert assembly – 10 singular items of each of #4/6-10/13/14 – 20 singular items of each of #15	96 868

NOTE!

For regulators delivered before the beginning of 1999 with turquoise back-up rings – or regulators without back-up rings – the following part numbers apply:

#	DESCRIPTION	ORDERING NO.	NOTES
15	O-ring and back-up rings	460 190 137	20 pack

BREATHING HOSES AND MANIFOLDS

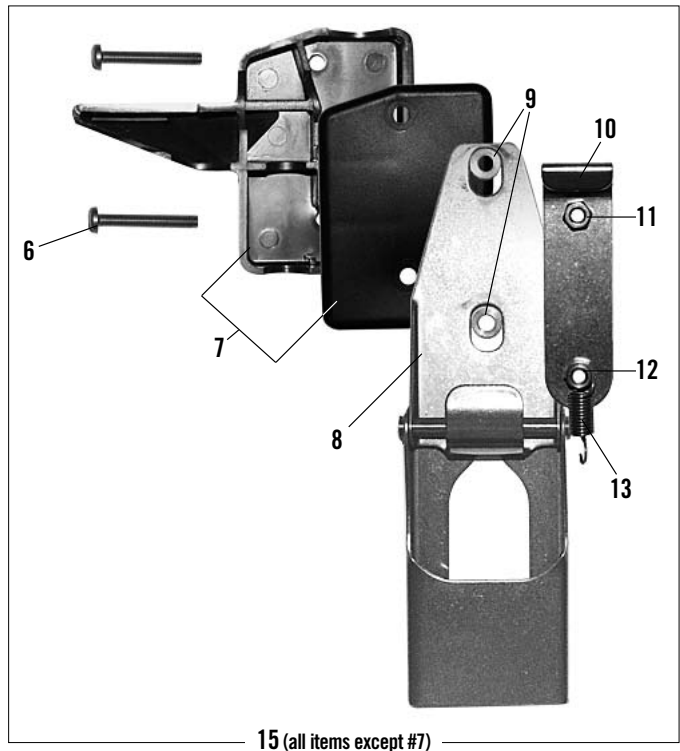
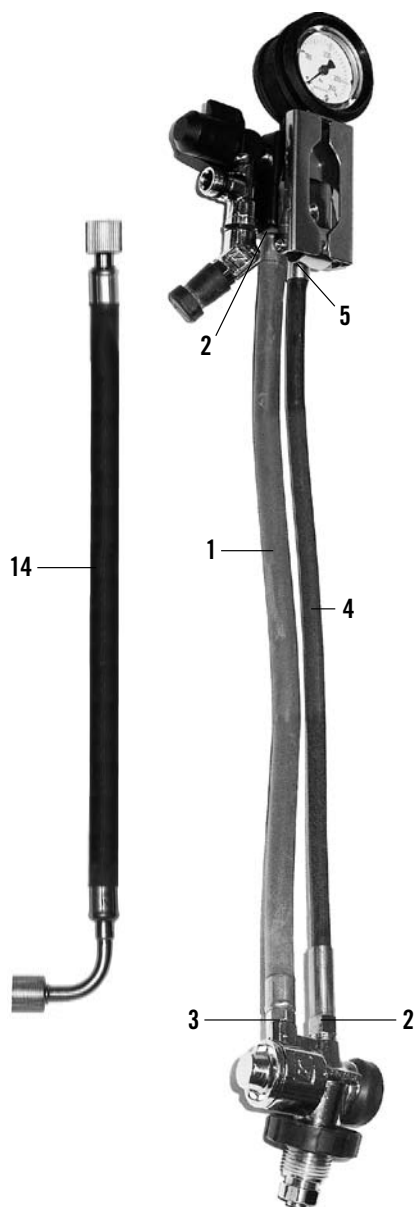


#	DESCRIPTION	ORDERING NO.	NOTES
1	Breathing hose	460 190 360	L=1.35m
2	Breathing hose	460 190 236	L=1.35m
3	Breathing hose	460 190 361	L=0.82m
4	Breathing hose	460 190 362	L=0.55m
5	Breathing hose	460 190 363	L=0.82m
6	Breathing hose	336 190 287	L=0.55m
7	Breathing hose	460 190 364	L=0.50m
8	Female quick coupling	460 190 366	
9	T-Manifold	460 190 264	
10	Hose connection	460 190 367	
11	Non-return valve	346 190 260	
12	Cone with O-ring	460 190 368	
13	Non-return valve	346 190 223	
14	Cone with O-ring	460 190 369	
15	O-ring	336 190 228	10 pack
16	a. Quick coupling	96 531-51	IS
	b. — —	460 190 370	EURO

#	DESCRIPTION	ORDERING NO.	NOTES
17	O-ring	346 190 069	10 pack
18	Valve tube	460 190 371	EURO only
19	Protective cap	336 190 257	3 pack
20	O-ring	336 190 311	10-pack
21	O-ring	336 190 237	10-pack
22	O-ring	336 190 236	10-pack
23	3-way manifold	460 190 291	EURO
24	3-way manifold	460 190 293	IS
25	3-way manifold	460 190 292	EURO/EURO
26	Protective cap	97 340-51	3 pack

#	SERVICE KIT	ORDERING NR.
A	Service kit for 1 apparatus 3-way manifold – 1 singular item of each of #12/14/17 – 3 singular items of each of #15	460 190 294
A	Service kit for 10 apparatus 3-way manifold – 10 singular items of each of #12/14/17 – 30 singular items of each of #15	460 190 680

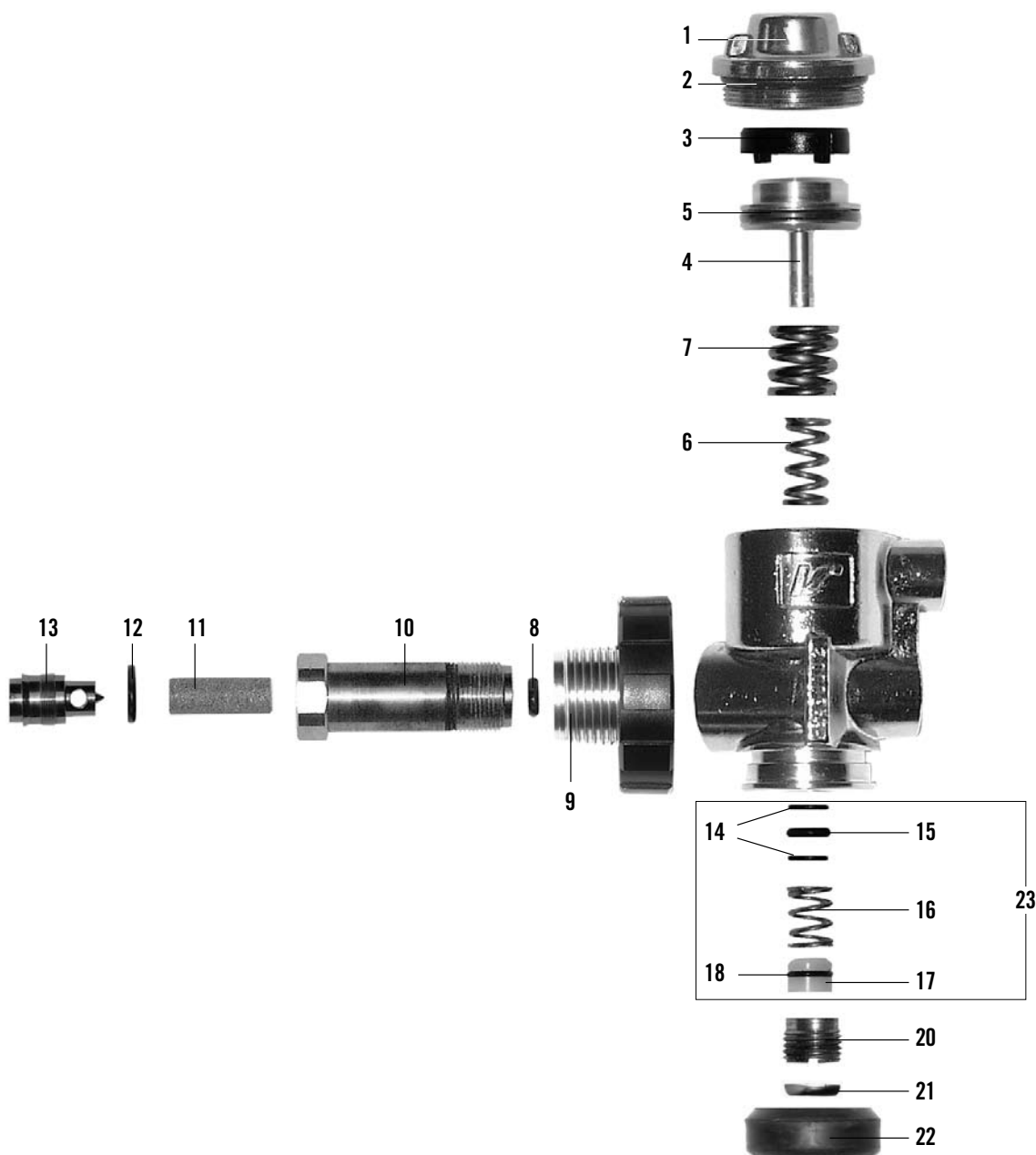
SPIROMATIC REGULATOR UNIT



#	DESCRIPTION	ORDERING NO.	NOTES
•	Regulator unit, reserve air warning	336 190 872	
•	Regulator unit, whistle warning	336 190 870	
1	Supply hose	336 190 288	Incl. 2&3
2	O-ring	336 190 221	10 pack
3	O-ring	336 190 311	10 pack
4	High pressure hose	336 190 265	Incl. 2&5
5	O-ring	336 190 235	10 pack
6	Screw	336 190 590	10 pack
7	Cover (front and back)	460 190 427	
8	Holder Assy	460 190 438	
9	Distance tube	336 190 639	10 pack
10	Hook	460 190 435	5 pack
11	Nut	336 190 645	10 pack
12	Nut	460 190 218	10 pack

#	DESCRIPTION	ORDERING NO.	NOTES
13	Spring	460 190 432	5 pack
14	Breathing hose	460 190 364	
15	Holder for warning device	336 190 768	Incl. #6, 8-13

SPIROMATIC PRESSURE REGULATOR

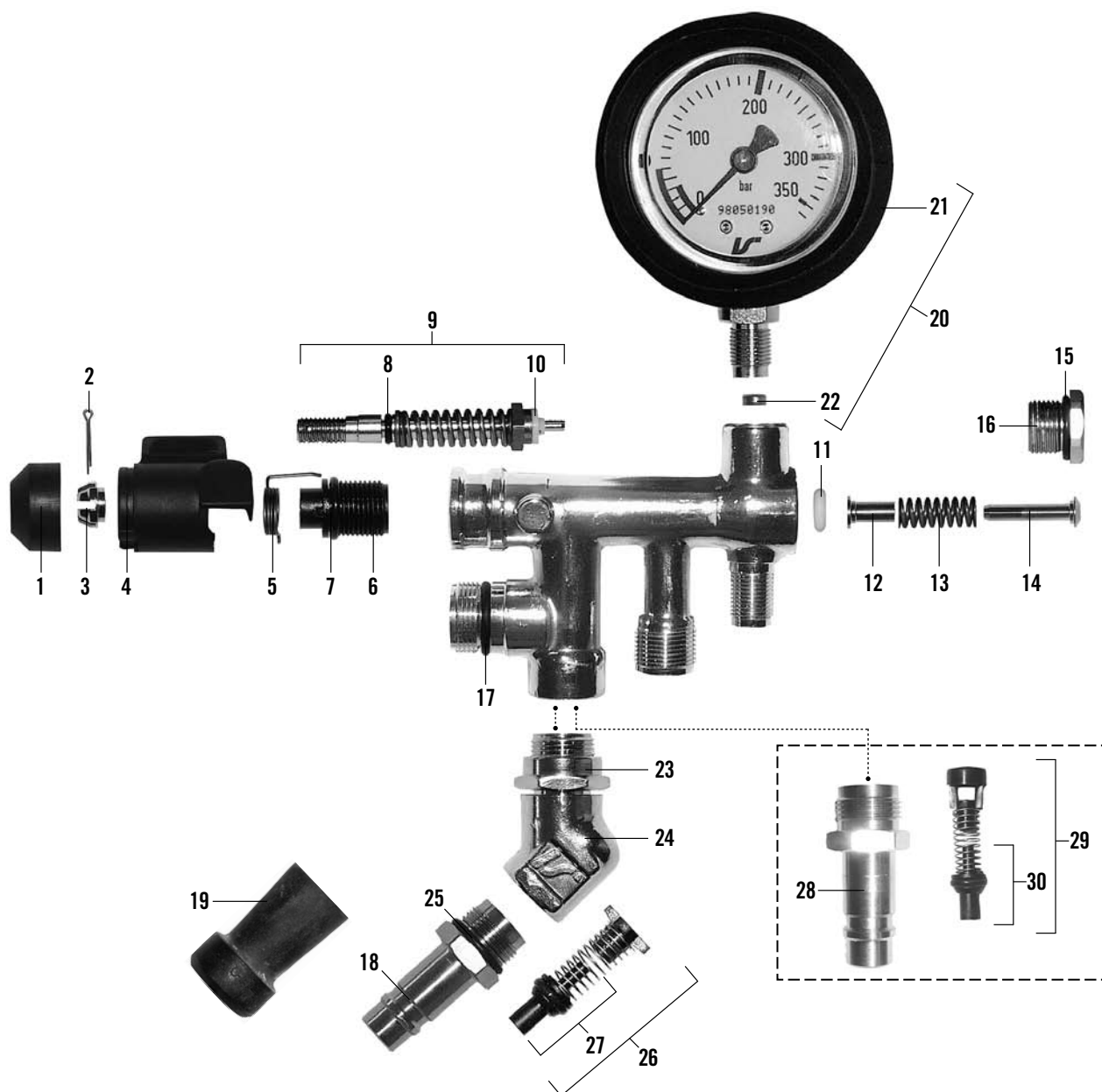


#	DESCRIPTION	ORDERING NO	NOTES
•	Pressure regulator	336 190 292	
1	Cover	460 190 426	
2	O-ring	336 190 229	10 pack
3	Stop ring	460 190 424	5 pack
4	Piston	460 190 420	
5	O-ring	336 190 230	10 pack
6	Regulating spring	460 190 422	5 pack
7	Spring	460 190 484	5 pack
8	O-ring	336 190 232	10 pack
9	Handwheel connector	460 190 385	
10	Connection nipple	460 190 383	
11	a. Inlet filter	346 190 643	10 pack
	b. — —	346 190 644	100 pack
12	a. O-ring	336 190 272	10 pack
	b. — —	460 190 237	100 pack
13	Nipple	460 190 382	

#	SPARE PART	ORDER #	NOTES
14	Supporting washer	336 190 637	10 pack
15	O-ring	336 190 233	10 pack
16	Spring	346 190 028	5 pack
17	Valve seat	96 087	10 pack
18	O-ring	336 190 231	10 pack
20	Adjusting screw	460 190 425	5 pack
21	Sealing plate	336 190 256	25 pack
22	Rubber cover	460 190 476	5 pack
23	Valve seat set	460 190 648	Incl. #14-18

#	SERVICE KIT	ORDERING NO.
A	Service kit for 1 apparatus Spiromatic pressure regulator – 1 singular item of each of #2/5/11/12/15/17/18/21 – 2 singular items of each of #14	460 190 318
B	Service kit for 10 apparatus Spiromatic pressure regulator – 10 singular items of each of #2/5/11/12/15/17/18/21 – 20 singular item of each of #14	96 864

SPIROMATIC RESERVE AIR WARNING DEVICE

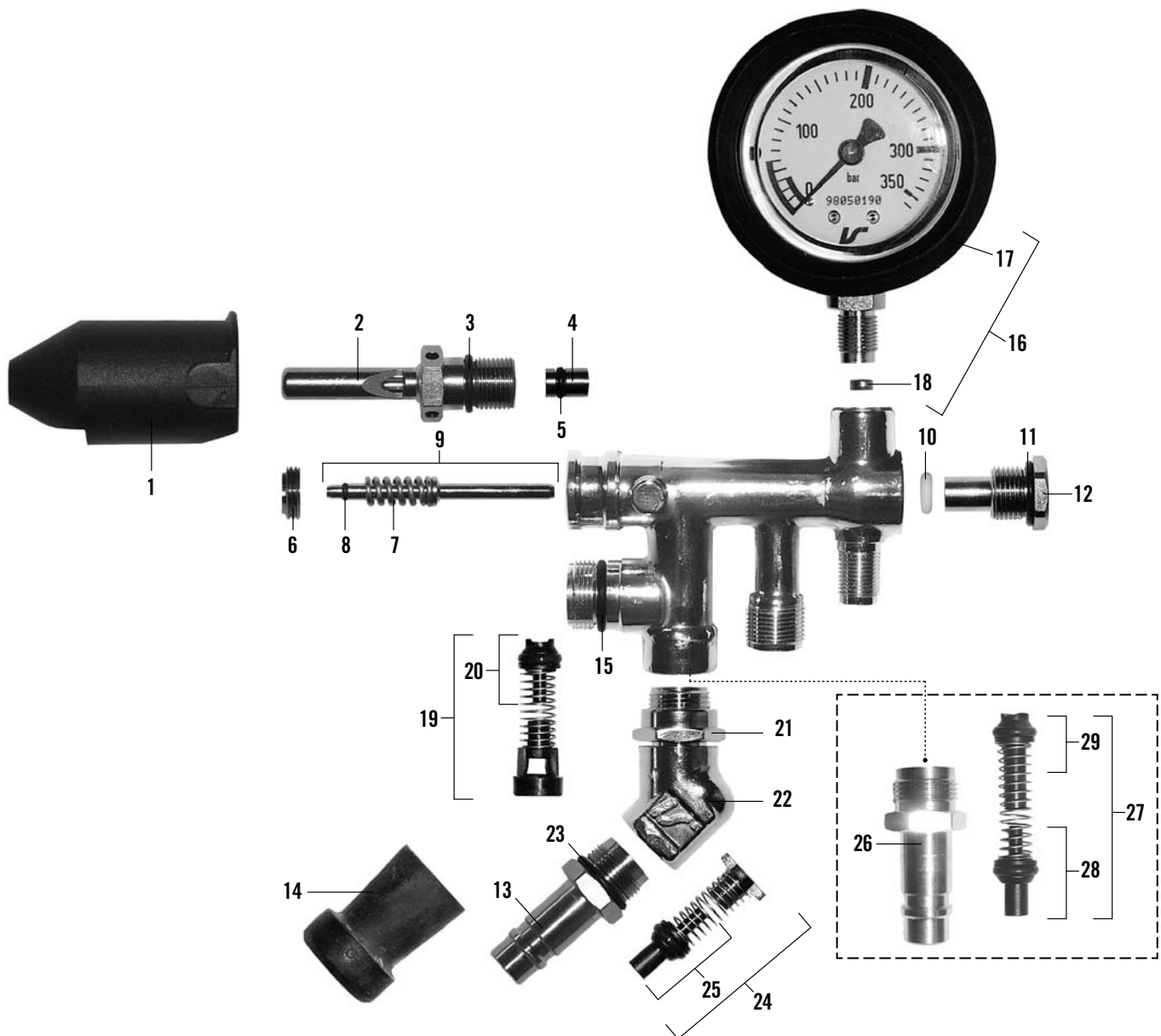


#	DESCRIPTION	ORDERING NO.	NOTES
	• Manifold reserve air warning	460 190 491	#1-26
1	Cap	460 190 421	10 pack
2	Split pin	336 190 380	10 pack
3	Nut	460 190 441	5 pack
4	Handle	460 190 433	5 pack
5	Torsion spring	460 190 430	5 pack
6	Nipple	460 190 428	5 pack
7	O-ring	336 190 381	10 pack
8	O-ring	336 190 382	10 pack
9	Valve stem	460 190 429	Incl. #8&10
10	Valve disc	336 190 383	5 pack
11	O-ring	336 190 240	5 pack
12	Guide bushing	460 190 439	5 pack
13	Spring	460 190 437	5 pack
14	Piston	460 190 431	5 pack
15	O-ring	336 190 384	10 pack
16	Plug	460 190 442	5 pack
17	O-ring	336 190 228	10 pack

#	DESCRIPTION	ORDERING NO.	NOTES
18	Quick coupling	96 531-51	IS
19	Protective cap	336 190 257	3 pack
20	Pressure gauge Assy	336 190 158	Incl. #21-22
21	Rubber cover	96 548-51	
22	Gasket set	336 190 159	
23	Nut	460 190 445	5 pack
24	Connection nipple	460 190 446	
25	O-ring	346 190 069	10 pack
26	Non-return valve	460 190 216	
27	Cone with O-ring	460 190 369	
28	Quick coupling	460 190 485	IS
29	Non-return valve	346 190 223	
30	Cone with O-ring	460 190 369	

#	SERVICE KIT	ORDERING NO.
A	Service kit for 1 apparatus Spiromatic reserve air warning device – 1 singular item of each of #2/7/8/10/11/15/17/25/27	460 190 319
B	Service kit for 10 apparatus Spiromatic reserve air warning device – 10 singular items of each of #2/7/8/10/11/15/17/25/27	460 190 681

SPIROMATIC WHISTLE WARNING DEVICE

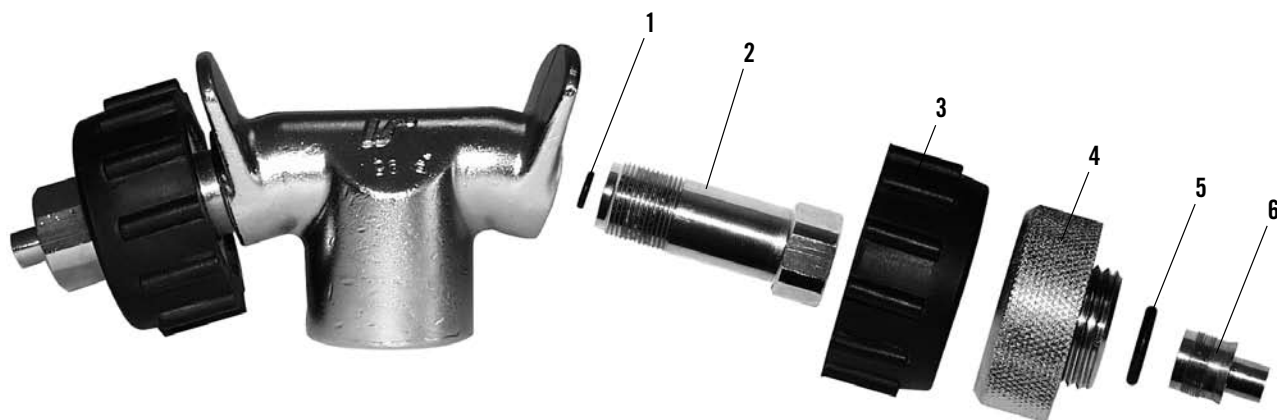


#	DESCRIPTION	ORDERING NO.	NOTES
•	Manifold whistle warning	460 190 492	#1-24
1	Protective cap	460 190 486	5 pack
2	Whistle	460 190 440	
3	O-ring	336 190 381	10 pack
4	Nozzle	460 190 423	5 pack
5	O-ring	336 190 371	10 pack
6	Adjusting screw	460 190 443	5 pack
7	Spring	460 190 434	5 pack
8	O-ring	336 190 239	10 pack
9	Spindle	460 190 436	Incl. #7&8
10	O-ring	336 190 240	5 pack
11	O-ring	336 190 384	10 pack
12	Plug	460 190 444	5 pack
13	Quick coupling	96 531-51	IS
14	Protective cap	336 190 257	3 pack
15	O-ring	336 190 228	10 pack
16	Pressure gauge Assy	336 190 158	Incl. #17-18

#	DESCRIPTION	ORDERING NO.	NOTES
17	Rubber cover	96 548-51	
18	Gasket set	336 190 159	
19	Non-return valve	460 190 489	
20	Cone with O-ring	460 190 368	
21	Nut	460 190 445	5 pack
22	Connection nipple	460 190 446	
23	O-ring	346 190 069	10 pack
24	Non-return valve	460 190 216	
25	Cone with O-ring	460 190 369	
26	Quick coupling	460 190 485	IS
27	Non-return valve	460 190 490	
28	Cone with O-ring	460 190 369	
29	Cone with O-ring	460 190 368	

#	SERVICE KIT	ORDERING NO.
A	Service kit for 1 apparatus Spiromatic whistle warning device – 1 singular item of each of #3/5/8/10/11/15/20/23/25	460 190 320
B	Service kit for 10 apparatus Spiromatic whistle warning device – 10 singular items of each of #3/5/8/10/11/15/20/23/25	460 190 682

T-PIECE



#	DESCRIPTION	ORDERING NO.	NOTES
•	a. T-piece, 300 bar	346 190 322	
	b. — —, 200 bar	346 190 094	
1	a. O-ring, 300 bar	336 190 232	10 pack
	b. — —, 200 bar	336 922 086	10 pack
2	a. Connection nipple, 300 bar	460 190 493	
	b. — —, 200 bar	460 190 494	
3	Hand wheel cover	460 190 483	5 pack
4	a. Hand wheel, 300 bar	460 190 495	
	b. — —, 200 bar	460 190 496	
5	a. O-ring	336 190 272	10 pack
	b. — —	460 190 237	100 pack
6	a. Nipple, 300 bar	460 190 497	
	b. — —, 200 bar	460 190 498	

#	DESCRIPTION	ORDERING NO.	NOTES
---	-------------	--------------	-------

TWO TYPES OF CYLINDER VALVE

IMPORTANT NOTICE

There are two different types of the cylinder valve.

Cylinder valves delivered under part numbers "98xxx" are Type II.

Deliveries of Type II cylinder valves commenced in July 2005.

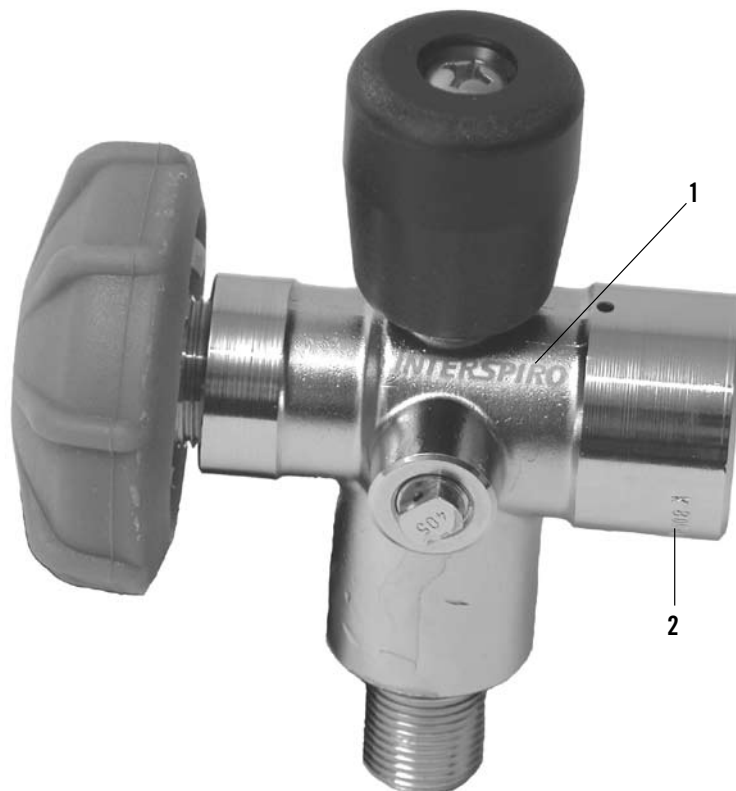
Type II cylinder valves can be identified by the marking with Interspiro logotype, see #1 in picture below. Furthermore the marking #2 according to picture below always begins with "98xxx".

Type I cylinder valves have no logotype marking according to #1 in picture below.

Type I cylinder valves can have different markings according to #2 in picture below, but never beginning with "98xxx".

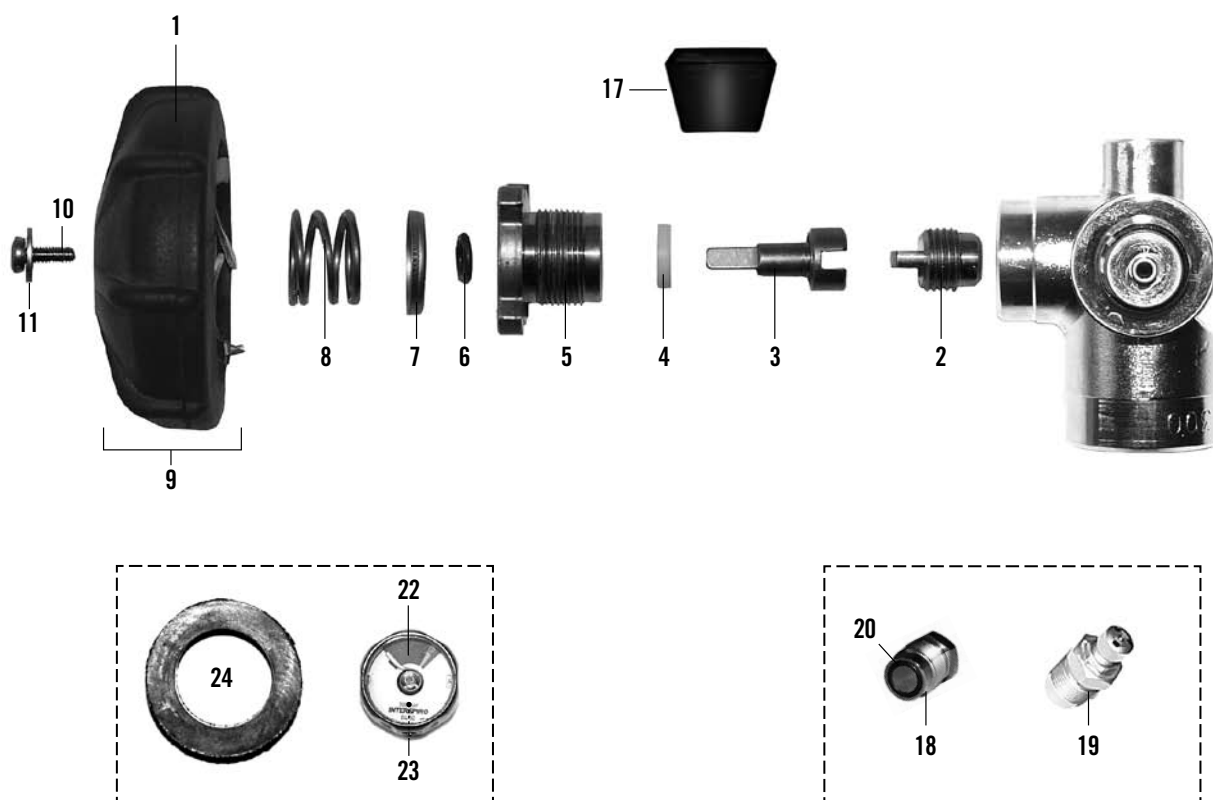
For spare parts to Type I cylinder valves see page 29.

For spare parts to Type II cylinder valves see page 30.



CYLINDER VALVE - TYPE I

Spare parts intended for organizations certified to perform periodic cylinder inspections are available in the separate spare part list 98675.



#	DESCRIPTION	ORDERING NO.	NOTES
1	Hand wheel cover	460 190 359	5 pack
2	Valve slug	336 922 108	5 pack
3	Valve stem	460 190 355	
4	Gland seal	336 190 260	10 pack
5	Gland nut	460 190 356	
6	O-ring	336 190 221	10 pack
7	Washer	336 922 104	10 pack
8	Spring	336 922 105	10 pack
9	Hand wheel Assy	460 190 243	
10	Screw	336 190 297	10 pack
11	Washer	336 190 296	10 pack
17	Cylinder support	346 190 230	5 pack
18	Blank plug with O-ring	460 190 220	Incl. #20

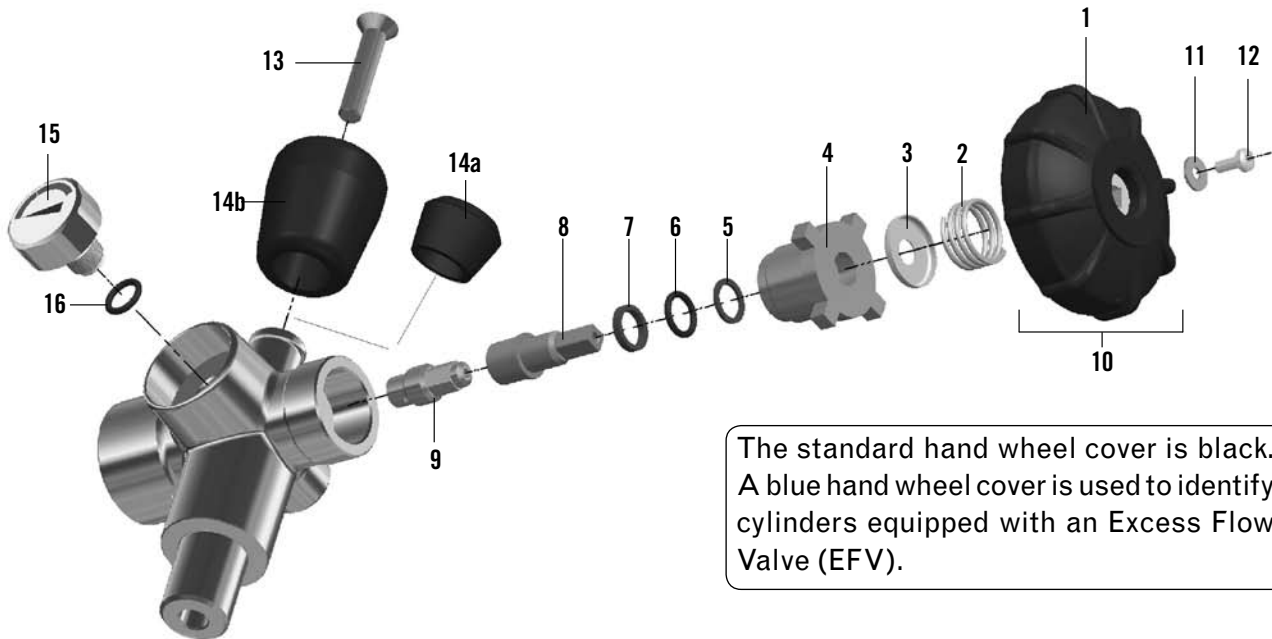
#	DESCRIPTION	ORDERING NO.	NOTES
19	Discharge plug	331 190 800	
20	O-ring	336 190 220	
22	Pressure indicator 300 bar	97842-51	Incl. #23&24
23	O-ring	95317-51	10 pack
24	Rubber protection	98618-51	5 pack

#	SERVICE KIT	ORDERING NO.
A	Service kit for 1 apparatus Cylinder valve - Type I - 1 singular item of each of #2/4/6	460 190 390
B	Service kit for 10 apparatus Cylinder valve - Type I - 10 singular items of each of #2/4/6	460 190 683

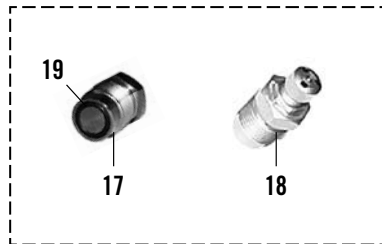
The numbering is not consecutive in order to retain identical numbering between different spare part lists.

CYLINDER VALVE - TYPE II

Spare parts intended for organizations certified to perform periodic cylinder inspections are available in the separate spare part list 98675.



The standard hand wheel cover is black. A blue hand wheel cover is used to identify cylinders equipped with an Excess Flow Valve (EFV).

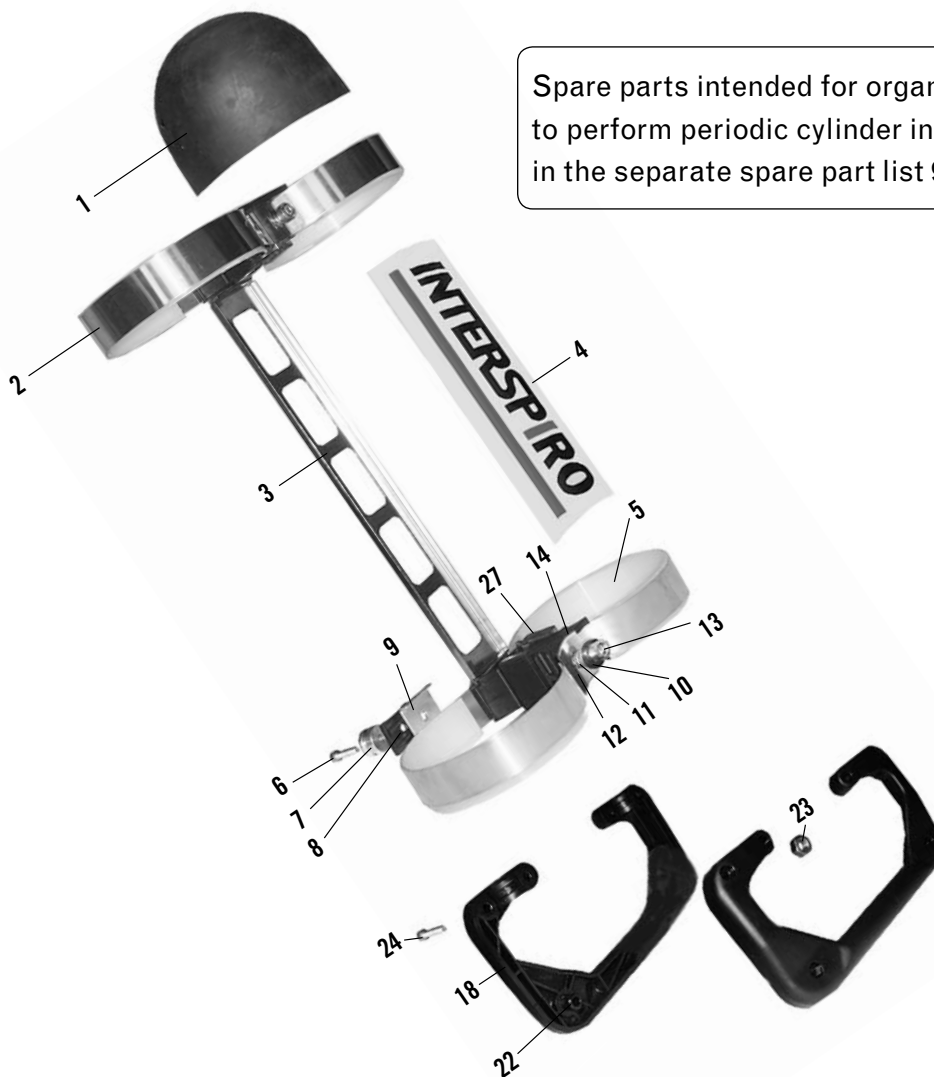


#	DESCRIPTION	ORDERING NO.	NOTES
1	a. Hand wheel cover, black b. — —, blue	460 190 359 97763-51	5 pack 5 pack
2	Spring	336 922 105	10 pack
3	Washer	336 922 104	10 pack
4	Gland nut	97 852-51	
5	Back-up ring	97 847-51	10 pack
6	O-ring	97 851-51	10 pack
7	Glide washer	97 853-51	10 pack
8	Valve stem	97 849-51	
9	Valve slug	97 850-51	
10	a. Hand wheel assy, black b. — —, blue	460 190 243 95 719-52	
11	Washer	336 190 296	10 pack
12	Screw	336 190 297	10 pack
13	Screw	460 190 684	10 pack

#	DESCRIPTION	ORDERING NO.	NOTES
14	a. Cylinder support b. — —, long	346 190 230 460 190 685	5 pack
15	Pressure indicator 300 bar	97 862-51	Incl. #16
16	O-ring	97 868-51	10 pack
17	Blank plug with O-ring	460 190 220	Incl. #19
18	Discharge plug	331 190 800	
19	O-ring	336 190 220	

#	SERVICE KIT	ORDERING NO.
A	Service kit for 1 apparatus Cylinder valve - Type II — 1 singular item of each of #5-7/9	460 190 686
B	Service kit for 10 apparatus Cylinder valve - Type II — 10 singular items of each of #5-7/9	460 190 687

CYLINDERS



Spare parts intended for organizations certified to perform periodic cylinder inspections are available in the separate spare part list 98675.

#	DESCRIPTION	ORDERING NO.	NOTES
1	a. Cylinder boot, 3.4 L	460 190 461	2 pack
	b. — —, 6.7 L	460 190 463	2 pack
	c. — —, 6.0 L	96 513-51	2 pack
	d. — —, 4.0 L	460 190 460	2 pack
2	a. Clamping strap, 3.4 L	460 190 465	
	b. — —, 6.7 L	460 190 466	
	c. — —, 4.0 L	336 190 146	
3	Spacing rod	460 190 620	
4	Label	460 190 230	10 pack
5	Protective band	460 190 219	10 pack
6	Screw	336 190 242	10 pack
7	Guide washer	460 190 472	2 pack
8	Spacer	460 190 247	
9	Retaining plate	460 190 468	10 pack
10	Washer	460 190 621	10 pack
11	a. Tension spring, 3.4 L	460 190 622	10 pack
	b. — —, 6.7 L	460 190 623	10 pack
12	Washer	460 190 624	10 pack
13	a. Screw, 3.4 L	460 190 625	10 pack
	b. — —, 6.7 L	460 190 644	10 pack

#	DESCRIPTION	ORDERING NO.	NOTES
14	a. Spacer for 3.4 L	460 190 474	2 pack
	b. — —, 6.7 L	460 190 475	2 pack
18	a. Handle Assy for 3.4 L	356 190 019	Incl. #22-24
	b. — —, 6.7 L	356 190 020	Incl. #22-24
	c. — —, 6.7 L M18	460 190 689	Incl. #22-24
	d. — —, 4.0 L	460 190 535	Incl. #22-24
22	Screw	336 190 241	10 pack
23	Nut	336 190 244	10 pack
24	Screw	336 190 243	10 pack
27	Anti-slide protection	460 190 467	4 pack

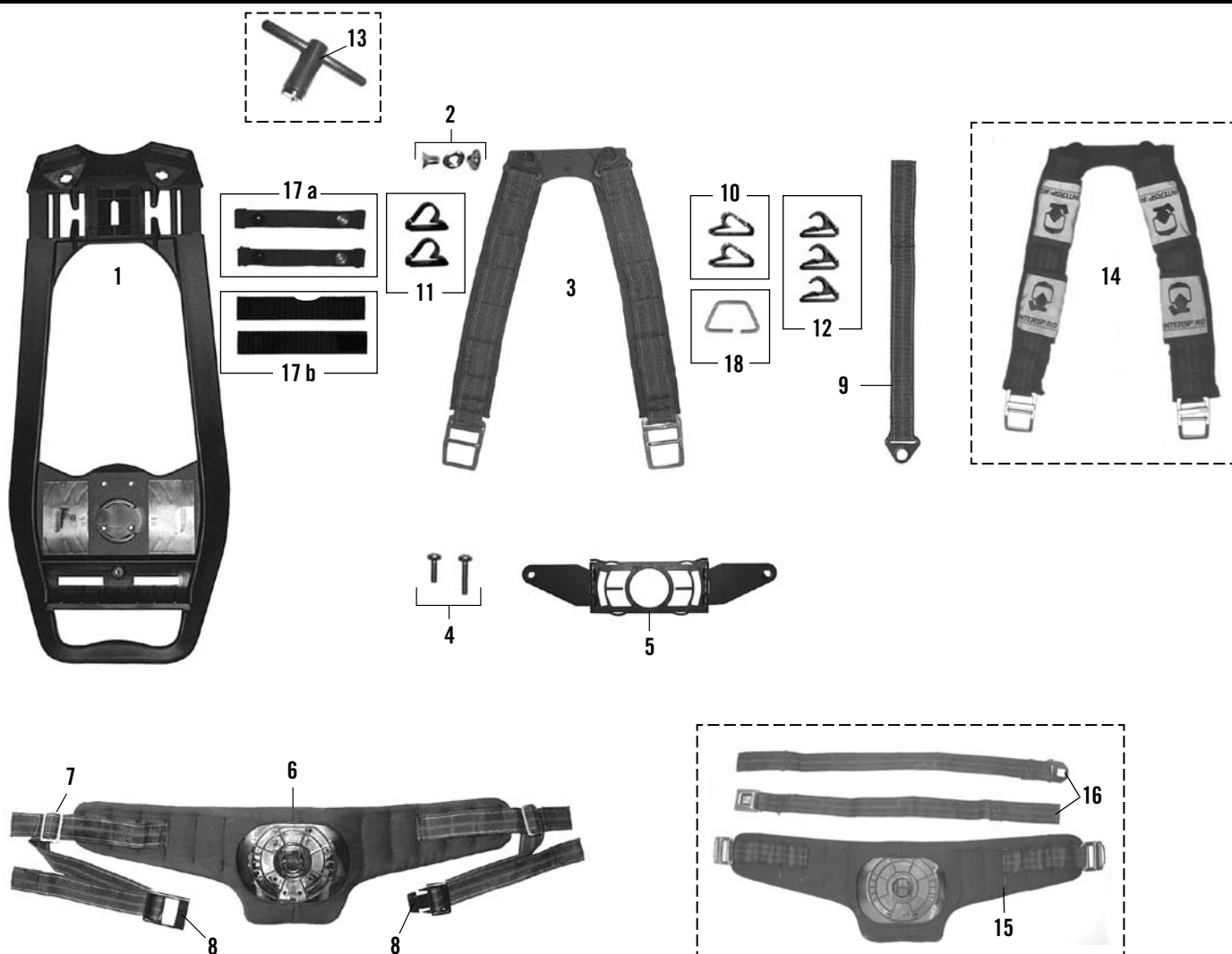
NOTE!

For cylinder pack consisting of 2 pcs 4.0 L cylinders (324) items #3/7-14/27 are replaced by (not shown in picture):

#	DESCRIPTION	ORDERING NO.	NOTES
28	Screw	336 190 242	10 pack
29	Spacer for 4.0 L	460 190 482	2 pack

The numbering is not consecutive in order to retain identical numbering between different spare part lists.

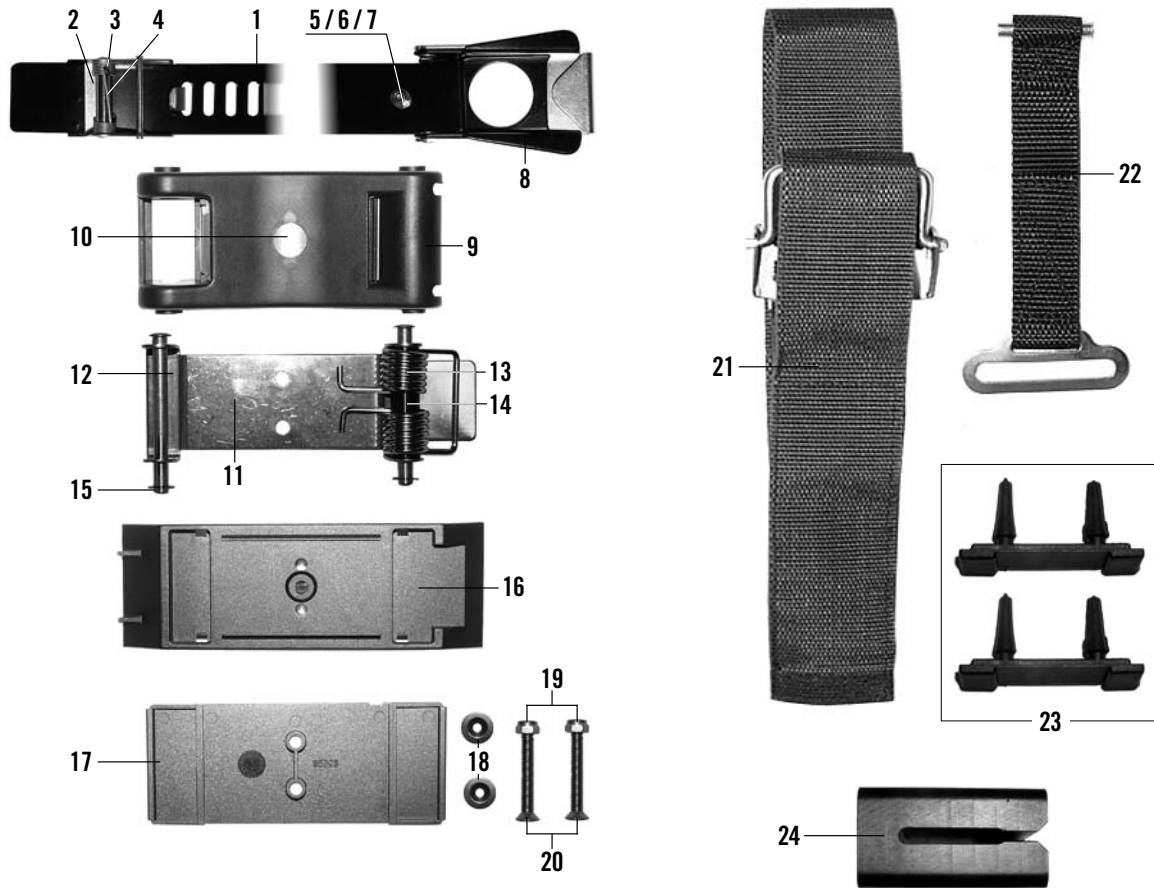
QS-HARNESS



#	DESCRIPTION	ORDERING NO.	NOTES
1	Backplate	460 190 378	
2	a. Screw kit	460 190 690	4 pack
	b. Screw kit	460 190 312	12 pack
3	a. Shoulder strap Assy, kevlar	460 190 095	
	b. — —, nylon	460 190 234	
4	a. Screw	460 190 066	10 pack
	b. — —, fixed regulator	460 190 372	10 pack
5	Pivot assembly	460 190 098	
6	a. Hip belt, kevlar	460 190 231	
	b. — —, nylon	460 190 232	
7	Webbing buckle	460 190 373	2 pack
8	Hip belt buckle	346 190 112	
9	a. Adjusting strap, kevlar	460 190 096	2 pack
	b. — —, nylon	460 190 235	2 pack
10	Hose holder, high pressure	460 190 182	2 pack
11	Hose holder, medium press.	460 190 181	2 pack
12	Hose holder, rescue hose	460 190 645	3 pack (QS-R)

#	DESCRIPTION	ORDERING NO.	NOTES
13	3-pin tool	96 886	Tool for #2
14	Shoulder strap assy, Velcro	96 452-51	
15	Hip belt, pull forward	96 451-51	
16	Waist straps with buckle	96 448-51	Left and Right
17	a. Hose strap, snap lock	96 029-51	2 pack (QS-R)
	b. Hose strap, Velcro	95 647-51	2 pack
18	Torch clip	98 951-51	

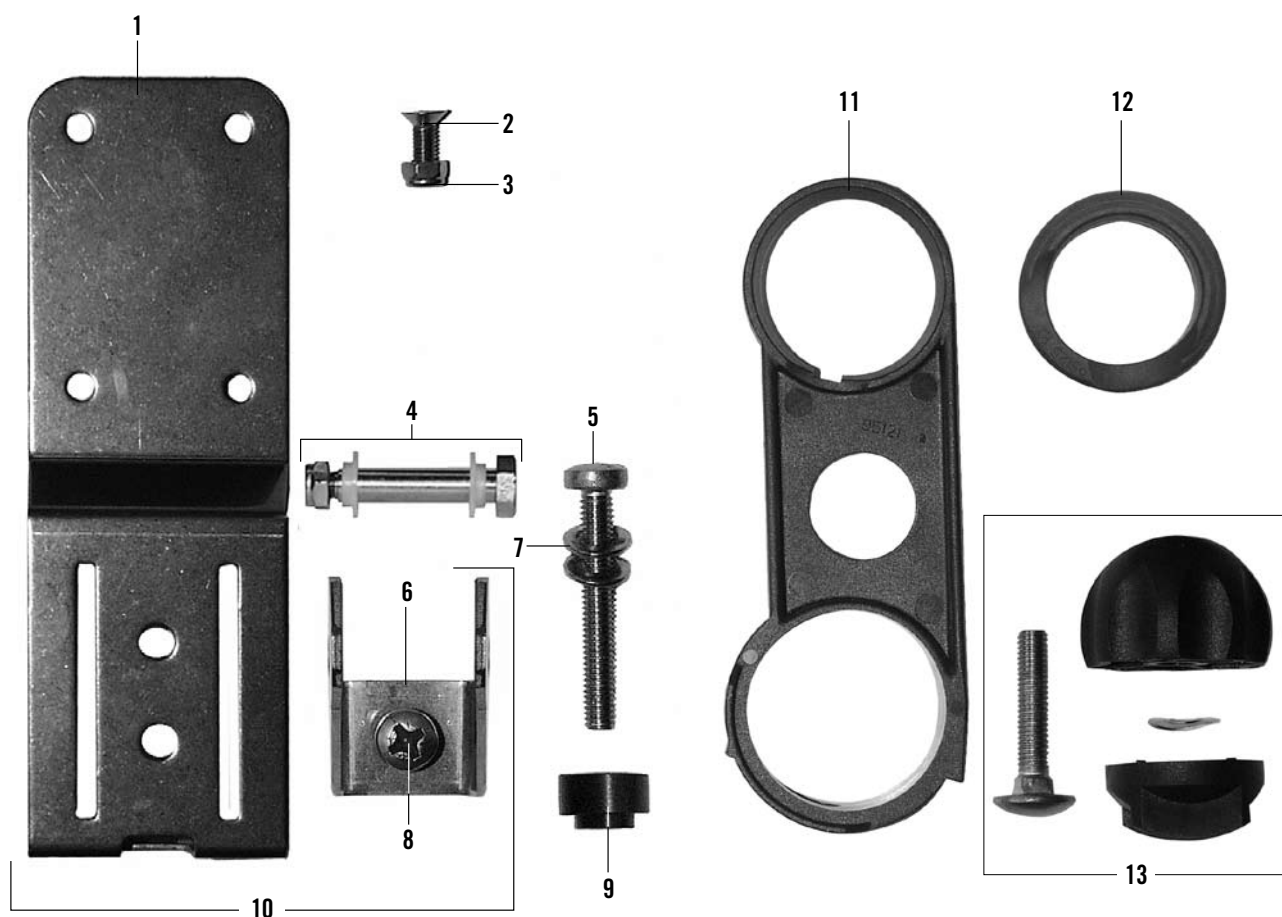
CYLINDER STRAP



#	DESCRIPTION	ORDERING NO.	NOTES
•	Cylinder strap Assy	336 190 828	#1-15
1	Metal strap	460 190 628	
2	Hook Assy	460 190 629	
3	Spring	460 190 630	5 pack
4	Bushing	460 190 631	5 pack
5	Screw	336 890 097	10 pack
6	Washer	460 190 379	10 pack
7	Locking nut	336 890 099	5 pack
8	Toggle fastener	460 190 632	
9	Support	460 190 633	5 pack
10	Guide plate	460 190 634	5 pack
11	Beam	460 190 635	5 pack
12	Bolt	460 190 636	5 pack
13	Tension spring	460 190 637	5 pack
14	Bushing	460 190 638	5 pack

#	DESCRIPTION	ORDERING NO.	NOTES
15	Circlip	336 890 096	10 pack
16	Adapter plate	460 190 175	
17	Bracket plate	460 190 174	
18	Washer	460 190 170	10 pack
19	Locking nut	336 922 053	10 pack
20	Screw	460 190 173	10 pack
21	a. Cylinder strap b. — —, single cylinder	460 190 100 460 190 646	
22	Strap holder	460 190 099	
23	Cylinder support	460 190 101	10 pack
24	Distance piece	460 190 627	

LOWER CYLINDER BRACKETS



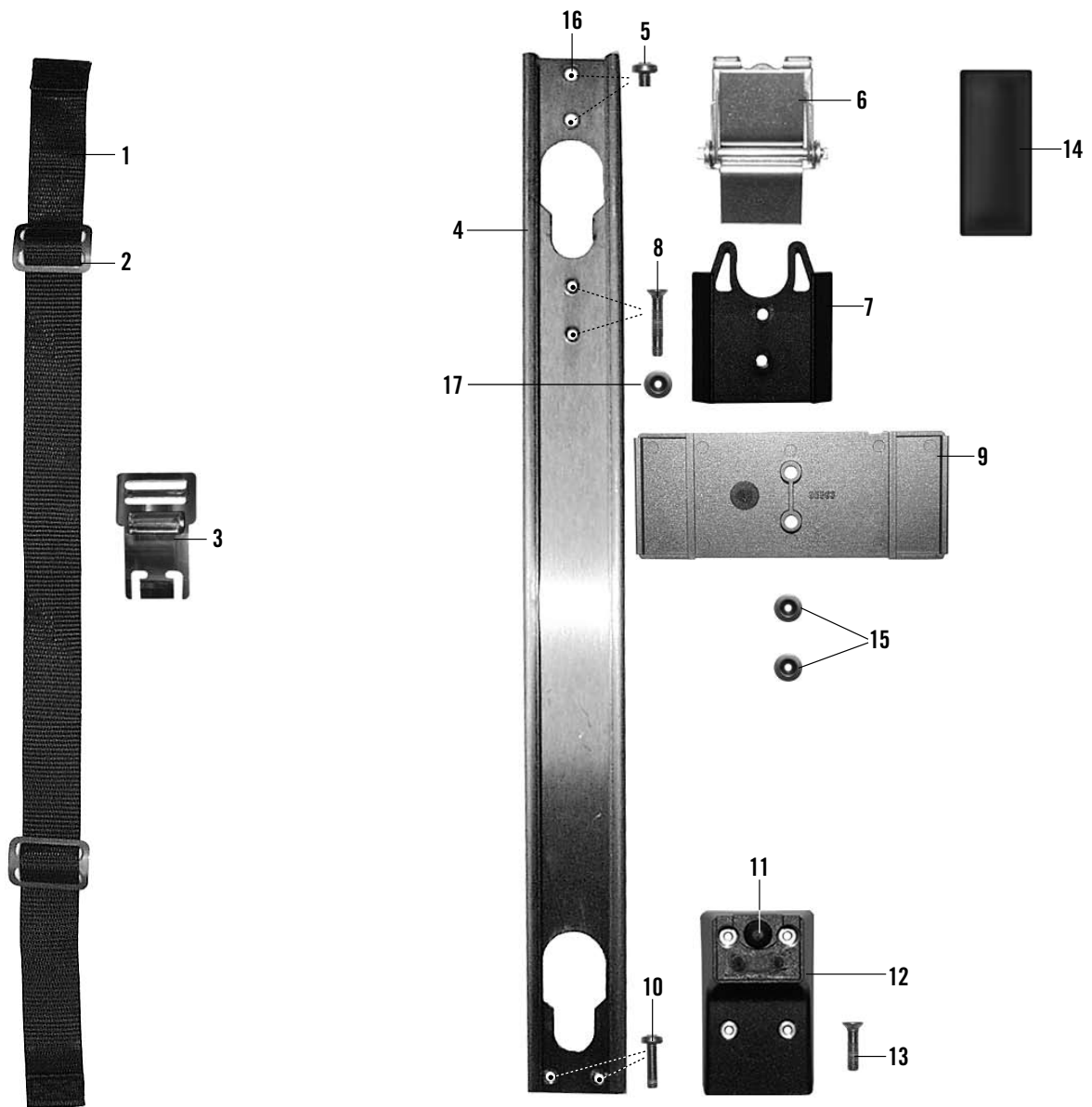
FIXED REGULATOR

#	DESCRIPTION	ORDERING NO.	NOTES
1	Bracket	460 190 226	
2	Screw and locking nut	460 190 178	4 pack
3	Locking nut	336 922 053	10 pack
4	Mounting kit	346 190 113	
5	Screw	460 190 372	10 pack
6	Support bracket	460 190 227	
7	Washer	336 190 261	10 pack
8	Screw and washer	460 190 228	10 pack
9	Spacer	460 190 229	10 pack
10	Bracket Assy	460 190 176	Incl. #1/6/8

FLOATING REGULATOR

#	DESCRIPTION	ORDERING NO.	NOTES
11	Cylinder bracket	460 190 248	2 pack
12	Cylinder support	460 190 065	2 pack
13	Knob and saddle Assy	460 190 155	

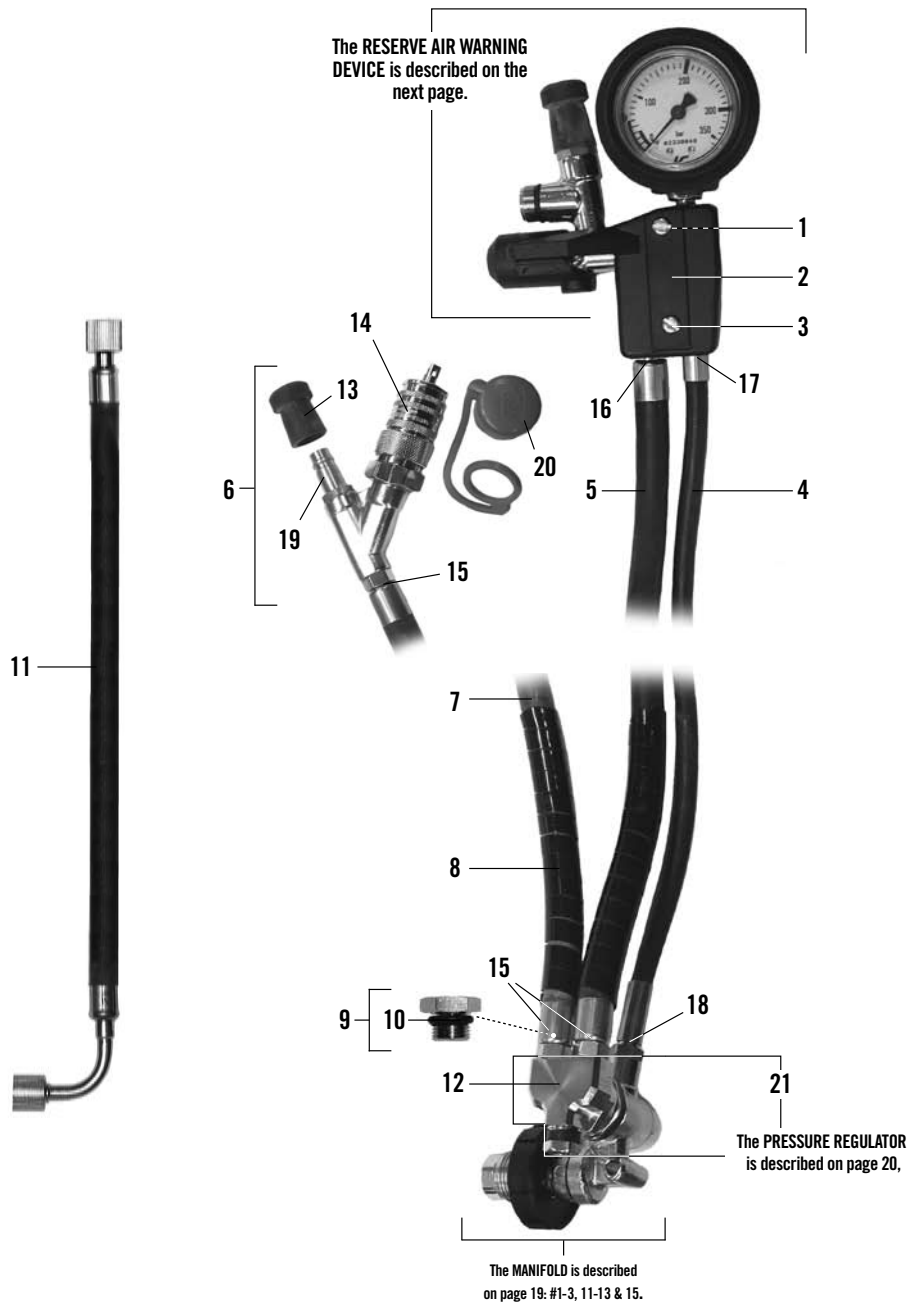
CYLINDER PACK BRACKET



#	DESCRIPTION	ORDERING NO.	NOTES
1	Adjusting strap	460 190 188	
2	Buckle with slot	460 190 190	2 pack
3	a. Manifold quick connect	460 190 180	
	b. — —	460 190 280	10 pack
4	Bracket	460 190 183	
5	Screw	346 190 280	10 pack
6	Locking arm	460 190 191	
7	Spacer	460 190 185	
8	Screw	460 190 187	10 pack
9	Bracket plate	460 190 174	
10	Screw	460 190 066	10 pack
11	Damper	460 190 186	
12	Holder for bracket	460 190 184	
13	Screw	460 190 172	4 pack
14	Cylinder support	460 190 224	10 pack

#	DESCRIPTION	ORDERING NO.	NOTES
15	Washer	460 190 170	10 pack
16	Washer	336 190 261	10 pack
17	Locking nut	336 922 053	

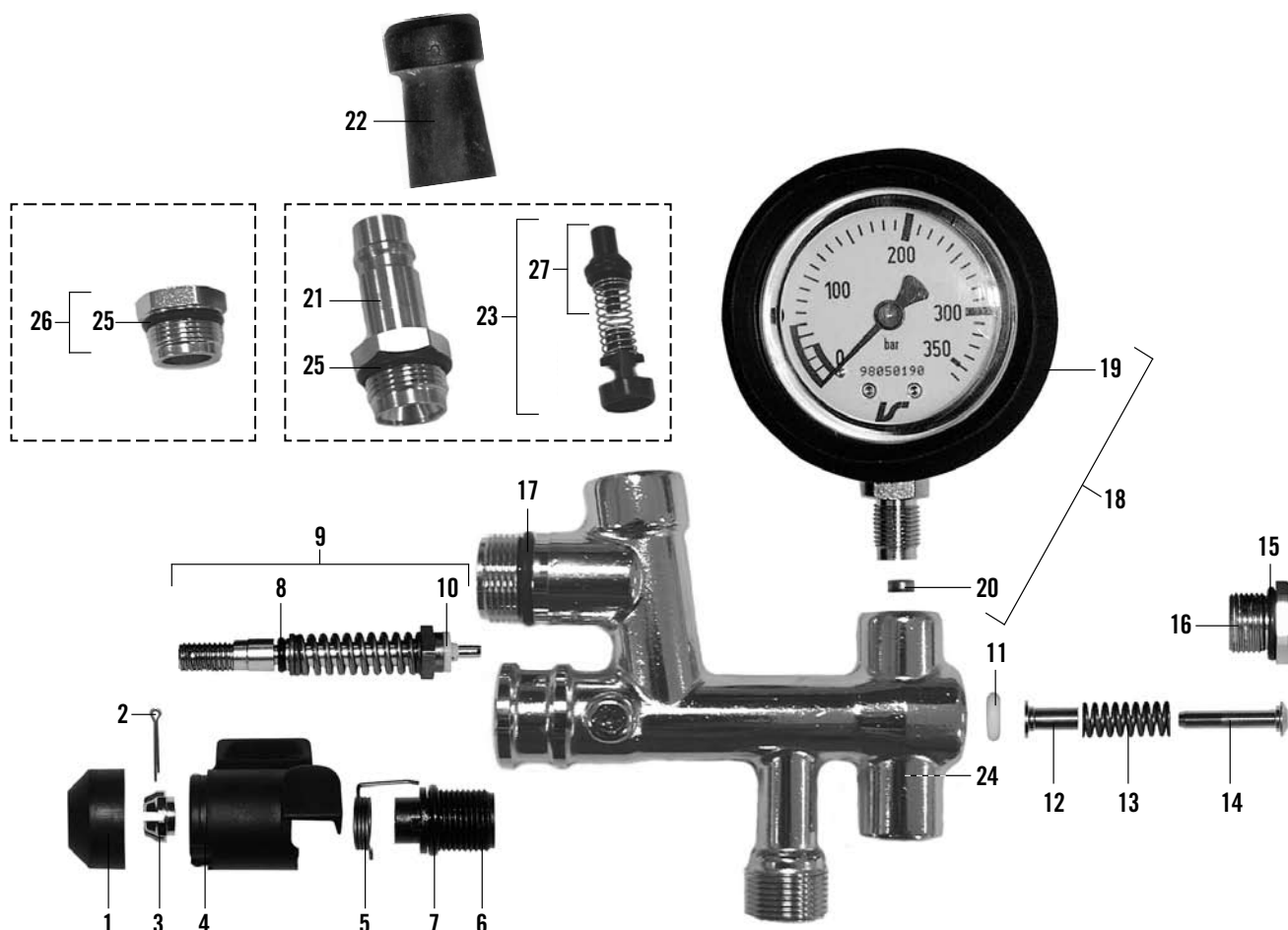
QS-R REGULATOR UNIT



#	DESCRIPTION	ORDERING NO.	NOTES
1	Nut	460 190 639	10 pack
2	Cover (front & back)	460 190 640	
3	Screw	336 190 247	10 pack
4	High pressure hose	96 529-51	Incl. #17-18
5	Supply hose	96 403-52	Incl. #15-16
6	Y-piece with quick coupling	95 240-52	
7	Medium pressure rescue hose	460 190 041	Incl. #15
8	Hose protection	95 846-51	2 pack
9	Blank plug with O-ring	460 190 418	
10	O-ring	460 190 419	10 pack
11	Breathing hose	460 190 364	0.5 m
12	Regulator cover with twin outlets	96 316-51	See picture

#	DESCRIPTION	ORDERING NO.	NOTES
13	Protective cap	336 190 257	3 pack
14	Quick coupling, female	95 803-51	IS
15	O-ring	336 190 311	10 pack
16	O-ring	336 190 221	10 pack
17	O-ring	336 190 235	10 pack
18	O-ring	336 190 312	10 pack
19	Quick coupling	96 531-51	IS
20	Protective cap	460 190 649	3 pack
21	Pressure regulator	96 317-01	

QS-R RESERVE AIR WARNING DEVICE



#	DESCRIPTION	ORDERING NO.	NOTES
	• Manifold reserve air warning	460 190 462	Incl. #1-25
1	Cap	460 190 421	10 pack
2	Split pin	336 190 380	10 pack
3	Nut	460 190 441	5 pack
4	Handle	460 190 433	5 pack
5	Torsion spring	460 190 430	5 pack
6	Nipple	460 190 428	5 pack
7	O-ring	336 190 381	10 pack
8	O-ring	336 190 382	10 pack
9	Valve stem	460 190 429	Incl. #8&10
10	Valve disc	336 190 383	5 pack
11	O-ring	336 190 240	5 pack
12	Guide bushing	460 190 439	5 pack
13	Spring	460 190 437	5 pack
14	Piston	460 190 431	5 pack
15	O-ring	336 190 384	10 pack
16	Plug	460 190 442	5 pack

#	DESCRIPTION	ORDERING NO.	NOTES
17	O-ring	336 190 228	10 pack
18	Pressure gauge Assy	336 190 158	Incl. #19-20
19	Rubber cover	96 548-51	
20	Gasket set	336 190 159	
21	Quick coupling	96 531-51	IS
22	Protective cap	336 190 257	3 pack
23	Non-return valve	346 190 223	
24	Friction washer	460 190 192	5 pack
25	O-ring	346 190 069	10 pack
26	Blank plug with O-ring	460 190 641	
27	Cone with O-ring	460 190 369	

#	SERVICE KIT	ORDERING NO.
A	Service kit for 1 apparatus QS-R Reserve air warning device – 1 singular item of each of #2/7/8/10/11/15/17/25/27	460 190 319
B	Service kit for 10 apparatus QS-R Reserve air warning device – 10 singular items of each of #2/7/8/10/11/15/17/25/27	460 190 681

SERVICE AND TESTING SCHEDULE

This schedule is valid for firefighting equipment.

The schedule shows minimum requirements for service and testing as recommended by Interspiro. Local requirements may differ due to regulations and environmental conditions.

In case of doubt consult your local Interspiro representative.

#	APPARATUS/COMPONENT	BEFORE USE	AFTER USE	EVERY YEAR	MIN EVERY 2 ND YEAR*	EVERY 6 YEARS
1	Breathing apparatus	S	D**S	F		F
2	Harness		C + V	V		
3	Pressure regulator, manifold and warning device					
3.1	Service parts					R
3.2	High pressure connection O-ring(-s)		V		R*	
3.3	Inlet filter				R*	
4	Hoses					
4.1	High pressure hoses		V	V		V
4.2	Medium pressure hoses		V	V		
5	Full face mask and breathing valve		D	V		
5.1	Diaphragm			V		
5.2	Exhalation valve			V		
5.2	Speech diaphragm			V		
5.3	Service parts					R
6	Cylinder valve		V			
6.1	Service parts					R***
7	Cylinder/Cylinder pack		V	Periodic tests in accordance with national regulations		

V = Visual inspection (renew if necessary)

C = Cleaning

D = Cleaning and disinfection

S = Short user test

F = Full inspection and performance tests

R = Renew

* Environmental conditions and frequency of use must be considered. To ensure trouble free operation it is advisable to replace once every year.

** If necessary.

*** Service is advised to be performed in the same periodic interval as cylinders, unless exceeding 6 years.

INTERSPIRO

www.interspiro.com

CENTRAL EUROPE

AUSTRIA

INTERSPIRO GesmbH www.interspiro.de

Feldbacher Str. 3 A-8200 GLEISDORF AUSTRIA

TEL +43 (0)311 236 133 FAX +43 (0)311 236 133 22 E-MAIL info@interspiro.de

GERMANY

INTERSPIRO GmbH www.interspiro.de

Postfach 1220 D-76691 FORST/BADEN GERMANY

TEL +49 (0)7251 8030 FAX +49 (0)7251 2298 E-MAIL info@interspiro.de

SWITZERLAND

INTERSPIRO AG www.interspiro.de

Güterstraße 47 CH-4133 PRATTELN SWITZERLAND

TEL +41 61 827 99 77 FAX +41 61 827 99 70 E-MAIL info@interspiro.ch

THE NETHERLANDS & BELGIUM

INTERSPIRO BV www.interspiro.nl

Televisieweg 113 NL-1322 BD ALMERE NETHERLANDS

TEL +31 (0)36 5363103 FAX +31 (0)36 5384809 E-MAIL info@interspiro.com

NORTH & SOUTH AMERICA

INTERSPIRO Inc. www.interspiro-us.com

10225 82nd Avenue PLEASANT PRAIRIE WI 53158-5801 USA

TEL +1 262 947 9901 FAX +1 262 947 9902 E-MAIL sales@interspiro-us.com

UNITED KINGDOM & IRELAND

INTERSPIRO Ltd. www.interspiro.com

7 Hawksworth Road Central Park TELFORD Shropshire TF2 9TU UNITED KINGDOM

TEL +44 (0)1952 200 190 FAX +44 (0)1952 299 805 E-MAIL info@interspiro.com

SCANDINAVIA, ASIA/PACIFIC & MIDDLE EAST

SWEDEN

NORDIC & EXPORT SALES DIVISION www.interspiro.com

Box 10060 S-181 10 LIDINGÖ SWEDEN

TEL +46 8 636 51 00 FAX +46 8 765 48 53 E-MAIL info@interspiro.com

MALAYSIA

NORDIC & EXPORT SALES DIVISION www.interspiro.com

305 & 305A Lorong Perak Taman Melawati 53100 KUALA LUMPUR MALAYSIA

TEL +60 3 4105 8122 FAX +60 3 4105 3122 E-MAIL asiapacific@interspiro.com